

# Notice

Copyright © Huawei Technologies Co., Ltd. 2010. All rights reserved.

## Trademarks and Permissions



HUAWEI and  are trademarks or registered trademarks of Huawei Technologies Co., Ltd.

Other trademarks, product, service and company names mentioned are the property of their respective owners.

## **NO WARRANTY**

THE CONTENTS OF THIS MANUAL ARE PROVIDED “AS IS”. EXCEPT AS REQUIRED BY APPLICABLE LAWS, NO WARRANTIES OF ANY KIND, EITHER EXPRESS OR IMPLIED, INCLUDING BUT NOT LIMITED TO, THE IMPLIED WARRANTIES OF MERCHANTABILITY AND FITNESS FOR A PARTICULAR PURPOSE, ARE MADE IN RELATION TO THE ACCURACY, RELIABILITY OR CONTENTS OF THIS MANUAL.

TO THE MAXIMUM EXTENT PERMITTED BY APPLICABLE LAW, IN NO CASE SHALL HUAWEI TECHNOLOGIES CO., LTD BE LIABLE FOR ANY SPECIAL, INCIDENTAL, INDIRECT, OR CONSEQUENTIAL DAMAGES, OR LOST PROFITS, BUSINESS, REVENUE, DATA, GOODWILL OR ANTICIPATED SAVINGS.

# 1 Getting Started

## About This Guide

This guide describes how to find and use the menu functions on your phone.

All the pictures in this guide are for your reference only. The actual appearance and display depend on the mobile phone you purchase.

## Packing List

Your phone package box contains the following:

- One mobile phone
- One Li-ion battery
- One travel charger
- One USB data cable
- One Quick Start Guide
- One Headset

## Installing SIM Card and Memory Card

Insert your SIM card before using your phone. Remove the SIM card and the battery only after powering off your phone. To use the SIM card properly, please read the following instructions carefully.

**NOTE:**

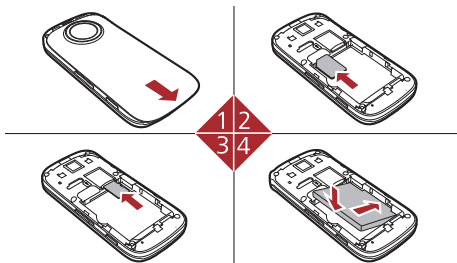
- *Keep the SIM card out of the reach of children.*
- *The SIM card and its metal contacts can be easily damaged by scratching or bending. Be careful when you carry , insert or remove the SIM card.*
- *Always disconnect the charger from the phone before loading or removing the SIM card.*

Your phone supports a memory card (microSD) with a capacity of up to 8 GB.

To load or remove the memory card, remove the battery cover.

## ▶▶ Getting Started

The following figures show the installation of the SIM card and memory card.



1	Remove the battery cover.
2	Insert the SIM card.
3	(Optional) Insert the memory card.
4	Insert the battery.

## Charging the Battery

### **NOTE:**

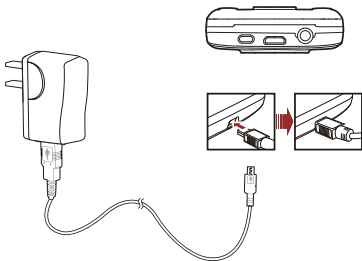
- *The battery discharges even while not being used. If you have not used it for a long time, please recharge it first.*

- *Do not strike, throw or cause any kind of violent shock to the battery, otherwise liquid leakage, body damage, overheating, fire or explosion may occur.*
- *The battery can be recharged but eventually wears out. If the battery lasts for a shorter time period than usual after being charged normally, replace it with a battery of the same type.*
- *Charge the battery by using the charger connector and the USB cable supplied with your phone.*

Before charging the battery, ensure that the battery has been properly loaded into your phone.

1. Connect the USB interface of the USB cable to the travel charger.
2. Plug in the travel charger to a power socket.
3. Connect the mini USB interface of the USB cable to the charger connector of your phone. When the battery is being charged, the charging indicator blinks continuously.
4. When the charging indicator stops blinking, it indicates that the battery is full. Disconnect the charger connector from the power socket.
5. Disconnect the USB cable from the phone.

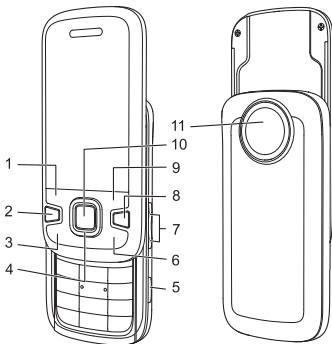
## »» Getting Started



**NOTE:** *The plug of the cable is in trapezium shape. Reversely inserting the plug may damage the mobile phone and the charger.*

# Getting to Know Your Phone

## Appearance of Your Phone

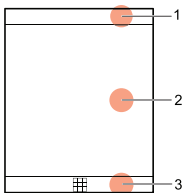


1	Left function key	2	Send key	3	Menu key
4	Scroll key	5	Camera key	6	Clear key
7	Volume key	8	Power/End key	9	Right function key
10	OK key	11	Camera		

## »» Getting Started

Left function key/Right function key	Perform the corresponding functions displayed above these keys.
Send key	Answer a call or view call records in standby mode.
Menu key	Quick access to Menu.
Scroll key	Scroll through a menu.
Camera key	<ul style="list-style-type: none"><li>• Short press to activate the camera.</li><li>• Long press to activate the flashlight.</li></ul>
Clear key	Delete characters to the left of the cursor in input mode.
Power/End key	<ul style="list-style-type: none"><li>• Switch on and off your phone by holding down this key.</li><li>• Return to the standby mode and reject or end a call.</li></ul>
OK key	Perform the corresponding functions displayed above OK key.

## Home Screen



1	Icon bar
2	Desktop
3	Prompt bar



Indicates signal strength.



Alarm clock is enabled.














Indicates power level of the battery.



The normal profile is activated.

## »» Getting Started

	The phone is currently in a GSM network.		The headset is plugged in.
	The phone is currently in a WCDMA network.		You have new text messages.
	You are using the roaming service.		You have new multimedia messages.
	Bluetooth is enabled.		You have new PUSH messages.
	Your phone connects with your PC.		You have a new voice message waiting.
	Call in progress.		

## Making a Call

- **NOTE:** During a call, you can select **Options** to perform operations in the option lists.

### Making a Call from Keyboard

1. In standby mode, press number key to enter phone number.
2. To make a call, perform one of the following operations:
  - Press the send key to make a voice call.
  - Select **Options** > **Voice call** to make a voice call;
3. Press the end key to terminate a call.

### Making a Call from Contacts

1. Access **Contacts**.
2. Select the desired contact.
3. To make a call, perform one of the following operations:
  - Press the send key to make a voice call.
  - Select **Options** > **Call** > **Voice call** to make a voice call

## Sending a Message

1. Select **Messages** > **Create message** to create a message.
2. During editing a message:
  - You can press down scroll key to add attachment files.
  - You can select **Options** to perform operations in the option list.
3. After editing the message, press OK key to add a recipient's number.
4. Press OK key to send the message.

## 2 Warnings and Precautions

This section contains important information pertaining to the operating instructions of your device. It also contains information about how to use the device safely. Read this information carefully before using your device.

### Electronic Device

Power off your device if using the device is prohibited. Do not use the device when using the device causes danger or interference with electronic devices.

### Medical Device

- Follow rules and regulations set forth by hospitals and health care facilities. Do not use your device when using the device is prohibited.
- Pacemaker manufacturers recommend that a minimum distance of 15 cm be maintained between a device and a pacemaker to prevent potential interference with the pacemaker. If you are using a pacemaker, use the device on the opposite side of the pacemaker and do not carry the device in your front pocket.

### Potentially Explosive Atmosphere

Power off your device in any area with a potentially explosive atmosphere, and comply with all signs and instructions. Areas that may have potentially explosive atmospheres include the areas where you would normally be advised to turn off your vehicle engine. Triggering of sparks in such areas could cause an explosion or a fire, resulting in bodily injuries or even deaths. Do not power on your device at refueling points such as service stations. Comply with restrictions on the use of radio equipment in fuel depots, storage, and distribution areas, and chemical plants. In addition,

## »» Warnings and Precautions

adhere to restrictions in areas where blasting operations are in progress. Before using the device, watch out for areas that have potentially explosive atmospheres that are often, but not always, clearly marked. Such locations include areas below the deck on boats, chemical transfer or storage facilities, and areas where the air contains chemicals or particles such as grain, dust, or metal powders. Ask the manufacturers of vehicles using liquefied petroleum gas (such as propane or butane) whether this device can be safely used in their vicinity.

## Traffic Security

Observe local laws and regulations while using the device. In addition, if using the device while driving a vehicle, comply with the following guidelines:

- Concentrate on driving. Your first responsibility is to drive safely.
- Do not talk on the device while driving. Use hands-free accessories.
- When you have to make or answer a call, park the vehicle at the road side before using your device.
- RF signals may affect electronic systems of motor vehicles. For more information, consult the vehicle manufacturer.
- In a motor vehicle, do not place the device over the air bag or in the air bag deployment area. Otherwise, the device may hurt you owing to the strong force when the air bag inflates.
- Do not use your device while flying in an aircraft. Power off your device before boarding an aircraft. Using wireless devices in an aircraft may cause danger to the operation of the aircraft and disrupt the wireless telephone network. It may also be considered illegal.

## Operating Environment

- Do not use or charge the device in dusty, damp, and dirty places or places with magnetic fields. Otherwise, it may result in a malfunction of the circuit.
- The device complies with the RF specifications when the device is used near your ear or at a distance of 1.5 cm from your body. Ensure that the device accessories such as a device case and a device holster are not composed of metal components. Keep your device 1.5 cm away from your body to meet the requirement earlier mentioned.
- On a stormy day with thunder, do not use your device when it is being charged, to prevent any danger caused by lightning.
- When you are on a call, do not touch the antenna. Touching the antenna affects the call quality and results in increase in power consumption. As a result, the talk time and the standby time are reduced.
- While using the device, observe the local laws and regulations, and respect others' privacy and legal rights.
- Keep the ambient temperature between -10°C and 35°C while the device is being charged. Keep the ambient temperature between -10°C to 35°C for using the device powered by a battery.

## Prevention of Hearing Damage

Using a headset at high volume can damage your hearing. To reduce the risk of damage to hearing, lower the headset volume to a safe and comfortable level.

## Safety of Children

Comply with all precautions with regard to children's safety. Letting the child play with your device or its accessories, which may include parts that can be detached from the device, may be dangerous, as it may present a choking hazard. Ensure that small children are kept away from the device and accessories.

## Accessories

Use the accessories delivered only by the manufacturer. Using accessories of other manufacturers or vendors with this device model may invalidate any approval or warranty applicable to the device, result in the non-operation of the device, and cause danger.

## Battery and Charger

- Unplug the charger from the electrical plug and the device when not in use.
- The battery can be charged and discharged hundreds of times before it eventually wears out. When the standby time and the talk time are shorter than the normal time, replace the battery.
- Use the AC power supply defined in the specifications of the charger. An improper power voltage may cause a fire or a malfunction of the charger.
- Do not connect two poles of the battery with conductors, such as metal materials, keys, or jewelries. Otherwise, the battery may be short-circuited and may cause injuries and burns on your body.
- Do not disassemble the battery or solder the battery poles. Otherwise, it may lead to electrolyte leakage, overheating, fire, or explosion.

- If battery electrolyte leaks out, ensure that the electrolyte does not touch your skin and eyes. When the electrolyte touches your skin or splashes into your eyes, wash your eyes with clean water immediately and consult a doctor.
- If there is a case of battery deformation, color change, or abnormal heating while you charge or store the battery, remove the battery immediately and stop using it. Otherwise, it may lead to battery leakage, overheating, explosion, or fire.
- If the power cable is damaged (for example, the cord is exposed or broken), or the plug loosens, stop using the cable at once. Otherwise, it may lead to an electric shock, a short circuit of the charger, or a fire.
- Do not dispose of batteries in fire as they may explode. Batteries may also explode if damaged.
- Danger of explosion if battery is incorrectly replaced. Recycle or dispose of used batteries according to the local regulations or reference instruction supplied with your device.

## Cleaning and Maintenance

- The device, battery, and charger are not water-resistant. Keep them dry. Protect the device, battery, and charger from water or vapor. Do not touch the device or the charger with a wet hand. Otherwise, it may lead to a short circuit, a malfunction of the device, and an electric shock to the user.
- Do not place your device, battery, and charger in places where they can get damaged because of collision. Otherwise, it may lead to battery leakage, device malfunction, overheating, fire, or explosion.

## »» Warnings and Precautions

- Do not place magnetic storage media such as magnetic cards and floppy disks near the device. Radiation from the device may erase the information stored on them.
- Do not leave your device, battery, and charger in a place with an extreme high or low temperature. Otherwise, they may not function properly and may lead to a fire or an explosion. When the temperature is lower than 0°C, performance of the battery is affected.
- Do not place sharp metal objects such as pins near the earpiece. The earpiece may attract these objects and hurt you when you are using the device.
- Before you clean or maintain the device, power off the device and disconnect it from the charger.
- Do not use any chemical detergent, powder, or other chemical agents (such as alcohol and benzene) to clean the device and the charger. Otherwise, parts of the device may be damaged or a fire can be caused. You can clean the device and the charger with a piece of damp and soft antistatic cloth.
- Do not dismantle the device or accessories. Otherwise, the warranty on the device and accessories is invalid and the manufacturer is not liable to pay for the damage.

## Emergency Call

You can use your device for emergency calls in the service area. The connection, however, cannot be guaranteed in all conditions. You should not rely solely on the device for essential communications.

## Certification Information (SAR)

This device meets guidelines for exposure to radio waves.

Your device is a low-power radio transmitter and receiver. As recommended by international guidelines, the device is designed not to exceed the limits for exposure to radio waves. These guidelines were developed by the independent scientific organization International Commission on Non-Ionizing Radiation Protection (ICNIRP) and include safety measures designed to ensure safety for all users, regardless of age and health.

The Specific Absorption Rate (SAR) is the unit of measurement for the amount of radio frequency energy absorbed by the body when using a device. The SAR value is determined at the highest certified power level in laboratory conditions, but the actual SAR level of the device when being operated can be well below the value. This is because the device is designed to use the minimum power required to reach the network.

The SAR limit adopted by the USA and Canada is 1.6 watts/kilogram (W/kg) averaged over one gram of tissue. The highest SAR value reported to the FCC and IC for this device type when tested for use at the ear is X.XXX W/kg, and when properly worn on the body is X.XXX W/kg.

## FCC Statement

This equipment has been tested and found to comply with the limits for a Class B digital device, pursuant to Part 15 of the FCC Rules. These limits are designed to provide reasonable protection against harmful interference in a residential installation. This equipment generates, uses and can radiate radio frequency energy and, if not installed and used in accordance with the instructions, may cause harmful interference to radio communications. However, there is no guarantee that interference will not occur in a particular installation. If this equipment does cause harmful interference to

## »» Warnings and Precautions

radio or television reception, which can be determined by turning the equipment off and on, the user is encouraged to try to correct the interference by one or more of the following measures:

- Reorient or relocate the receiving antenna.
- Increase the separation between the equipment and receiver.
- Connect the equipment into an outlet on a circuit different from that to which the receiver is connected.
- Consult the dealer or an experienced radio/TV technician for help.

This device complies with Part 15 of the FCC Rules. Operation is subject to the following two conditions: (1) this device may not cause harmful interference, and (2) this device must accept any interference received, including interference that may cause undesired operation.

**Warning:** Changes or modifications made to this device not expressly approved by Huawei Technologies Co., Ltd. may void the FCC authorization to operate this device.

## Industry Canada Compliance

This phone complies with Industry Canada RSS 133/RSS 132/RSS 102. This phone complies with the Class B limits for radio-noise emissions as set out in the Industry Canada Interference-Causing Equipment Standard standard entitled "Digital Apparatus" (ICES-003).

V100R001 31010DML