

nexus one™

Owner's Guide

Google™

June 16, 2010
NOOGG-220-101

Legal

Copyright © 2010 Google Inc. All rights reserved.

Google, the stylized Google logo, Android, the stylized Android logo, Nexus One, and the stylized Nexus One logo are trademarks of Google Inc. All other company and product names may be trademarks of the companies with which they are associated.

Availability of Google applications, services, and features may vary by country, carrier, and manufacturer.

For more information about your Nexus One phone, contact your carrier or visit <http://www.google.com/phone>

Contents

Contents 3

Your phone and accessories 5

What's in the box 6

Getting to know your phone 7

Installing the battery, SIM, and microSD card 8

- To open the phone's back cover 8

- To replace the phone's back cover 8

- To remove or insert the battery 9

- To remove or insert a microSD card 10

- To remove or insert a SIM card 11

Charging your phone 12

- To charge the phone 12

Using the headset 13

Monitoring the status and trackball lights 14

Turning the phone on and off 15

- To turn on the phone 15

- To unblock a SIM 15

- To turn off the phone 15

Specifications 17

Your phone and accessories

Your Google™ Nexus One™ phone comes with a number of accessories, including a headset and a protective pouch. For safety reasons, the battery is not shipped inside the phone, so you need to insert it and charge it fully before using your phone. This guide describes the parts of your phone, how to install and charge the battery, how to turn the phone on and off, and other useful information.

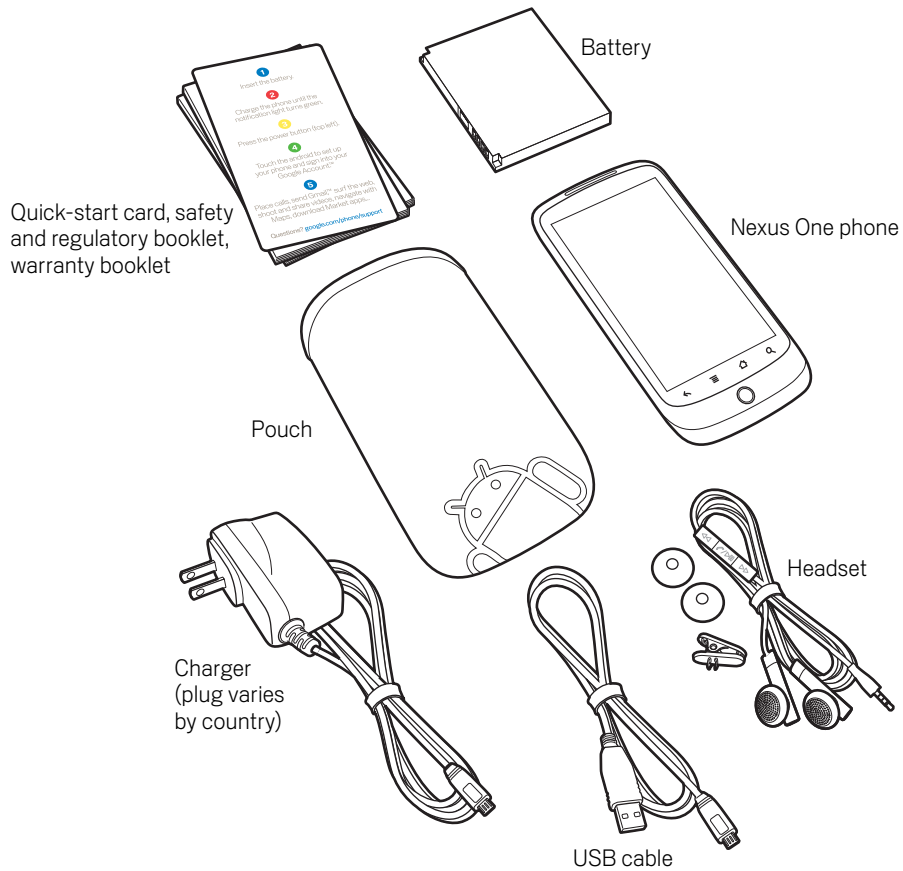
For more information about using the Android™ mobile technology platform that runs on your phone, including the basics of using it to place phone calls and how to use its applications to browse the web, read email, and so on, visit your carrier's support site and refer to the *Android User's Guide*, available from <http://www.google.com/phone>.

In this section

- "What's in the box" on page 6
- "Getting to know your phone" on page 7
- "Installing the battery, SIM, and microSD card" on page 8
- "Charging your phone" on page 12
- "Using the headset" on page 13
- "Monitoring the status and trackball lights" on page 14
- "Turning the phone on and off" on page 15

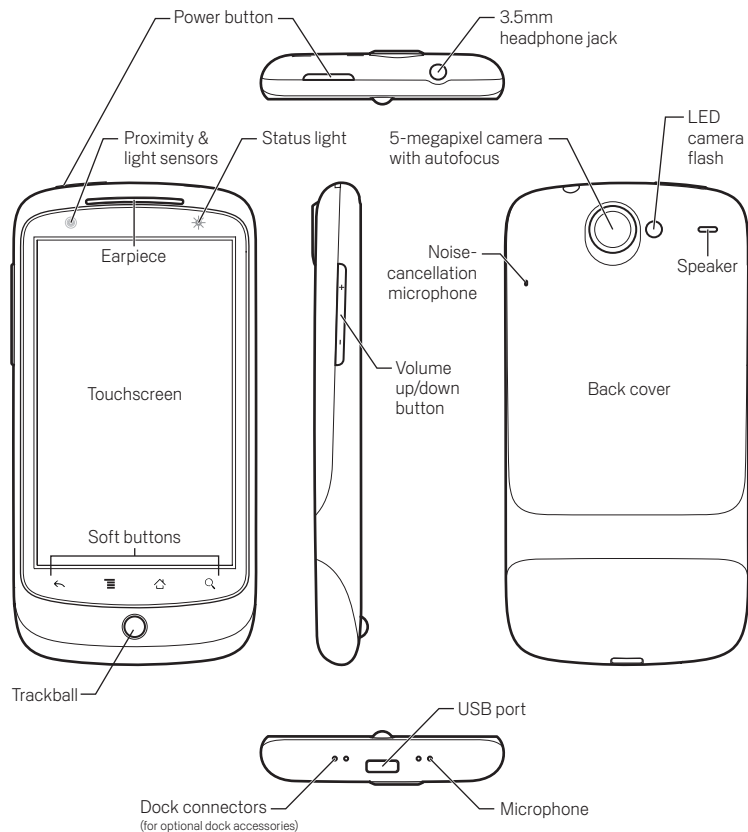
What's in the box

Your Nexus One phone comes with the following accessories.



A 4GB microSD card (not shown) is installed in the phone. If you purchased the phone with a contract with a GSM mobile carrier, a SIM card for your carrier is also installed. See "Installing the battery, SIM, and microSD card" on page 8 to learn how to insert or remove the battery, microSD card, and SIM.

Getting to know your phone



Before you use the phone, insert the battery and charge it fully. (See “Installing the battery, SIM, and microSD card” on page 8 and “Charging your phone” on page 12.)

Other sections in this chapter describe the use and function of the headset and its remote, status light, turning the phone on and off, and so on.

Your carrier's support site and the *Android User's Guide* (available from <http://www.google.com/phone>) describe how to place calls, use the trackball, and other basic features of the phone, including turning it on for the first time.

The 5-megapixel camera's lens is underneath a protective lens that is built into the phone's back cover. The camera features an autofocus mechanism and up to 2x digital zoom. Be sure to keep the lens clean with lint-free cloth; smudges and fingerprints will distort your pictures. The camera's LED flash is next to the lens. Taking pictures and shooting videos is described in the *Android User's Guide*.

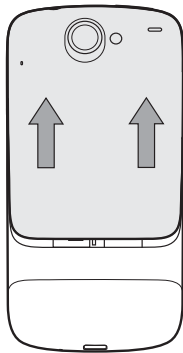
Installing the battery, SIM, and microSD card

To install or replace the battery, SIM, or microSD card, you must remove the phone's back cover.

You must install the battery before you can use the phone. The phone comes with a 4GB microSD card for storage already installed. If you purchased the phone with a contract, it also comes with a SIM card for your carrier installed.

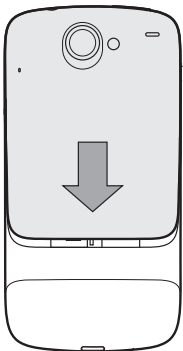
To open the phone's back cover

- ▶ Firmly press your thumbs on either side of the back cover, just below the camera lens, and push the cover up to remove it.



To replace the phone's back cover

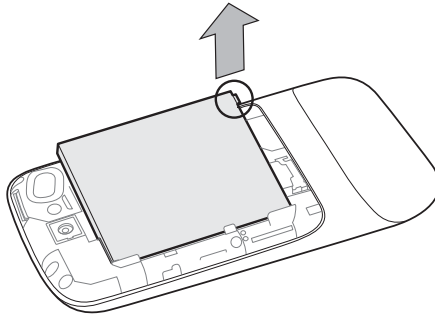
- ▶ Place the cover on the back of the phone and push it down into place.



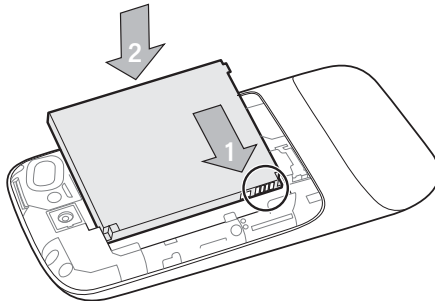
To remove or insert the battery

You must open the phone's back cover to remove or insert the battery.

- 1 Turn off the phone.
See "Turning the phone on and off" on page 15.
- 2 Lift out the battery by slipping your finger under the small corner tab.



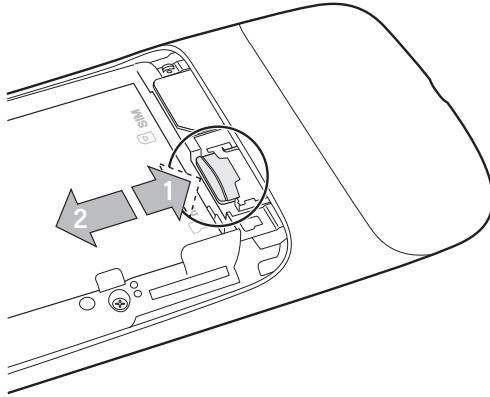
- ▶ Insert the battery by aligning the gold contacts on the phone and the battery and then gently pressing the battery into place.



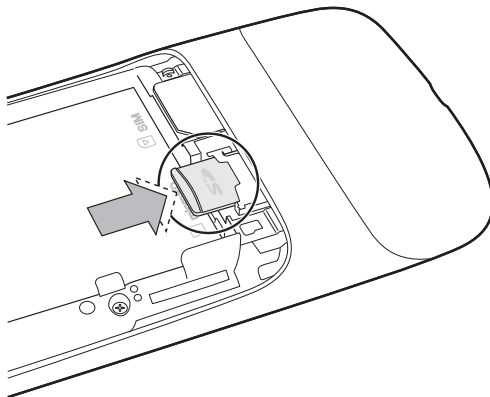
To remove or insert a microSD card

You must open the phone's back cover and remove the battery to remove or insert the microSD card.

- ▶ Remove the microSD card by pressing it toward the bottom of the phone. When you release the card it starts to pop out of its slot, so you can pull it the rest of the way out.



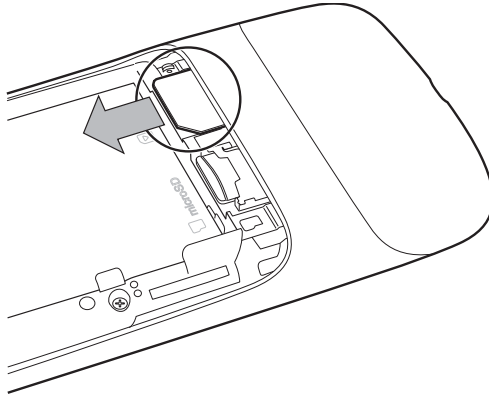
- ▶ Insert the microSD card by aligning it and then sliding it into its slot, until it clicks into place.



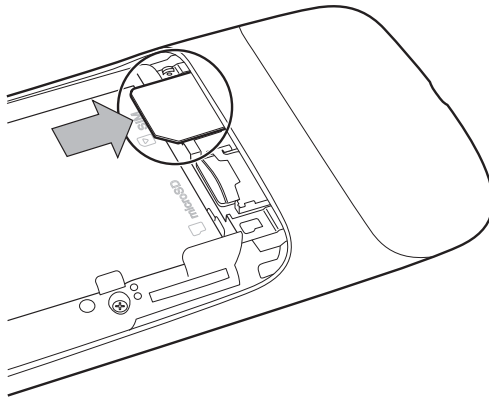
To remove or insert a SIM card

You must open the phone's back cover and remove the battery to remove or insert the SIM card.

- ▶ Remove the SIM card by sliding it out of its slot with the tip of your finger.



- ▶ Insert the SIM card by aligning it (notch to the top left and gold contacts down) and then sliding it into its slot.



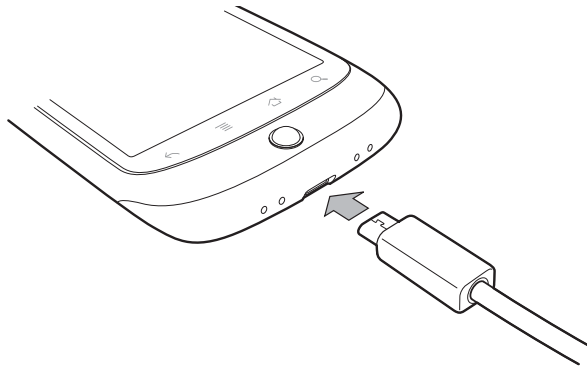
Charging your phone

Before you can use your phone, you must charge it fully, until the status light turns green. See “Monitoring the status and trackball lights” on page 14.

The phone also charges when it is connected to a computer's USB port with the included USB cable, and when inserted in an optional desktop or car dock accessory. For information about connecting the phone to a computer, see the *Android User's Guide*.

To charge the phone

- 1 Plug one end of the charger into an AC outlet.
- 2 Plug the other end into the USB port on your phone



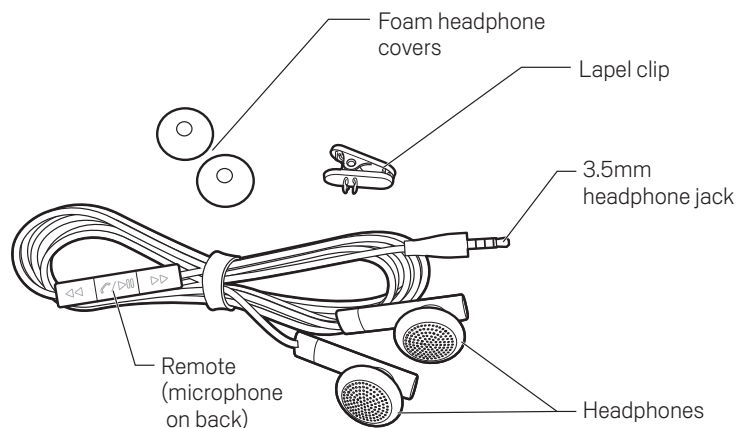
The phone's status light turns orange, indicating that it's charging.
When charging is complete, the status light turns green.

- 3 When the phone is fully charged, disconnect it from the charger.

Using the headset

The headset plugs into the phone's 3.5mm headset jack. It includes a pair of headphones and a remote with a microphone on the back. The remote also includes buttons that you use to manage phone calls and music.

Use the lapel clip to attach the remote high on your shirt, so the microphone is near your mouth.



The remote features a microphone on the back and three buttons on the front.

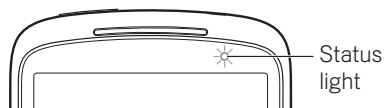
▷▷	Skip to the next music track.
◁◁	Skip to the previous music track.
📞/▶⏸	When listening to music, press pause and play. For an incoming call, press to answer. During a phone call, press to mute or unmute the microphone. During a phone call, press & hold to hang up the call.

You control the headphones' volume with the phone's **Volume Up/Down** button.

Monitoring the status and trackball lights

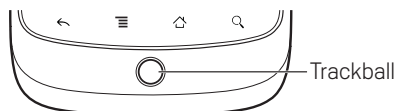
The status light (to the right of the earpiece) and the **Trackball** change colors, flash, or glow briefly to inform you of the charging status of the phone and other important information.

Status light



Status light state	Meaning
Green	Fully charged (when connected to charger)
Orange	Charging (when connected to charger)
Flashing red	Battery low

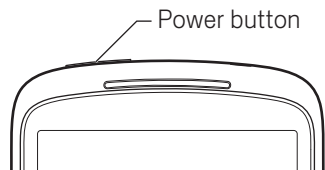
Trackball



Trackball state	Meaning
Flashing white	Incoming call.
Flashing blue	Incoming call when connected to a Bluetooth headset.
White or other color pulse	Notification received. Some applications use colors other than white for notifications. You can configure the trackball to pulse once or repeatedly when you receive a new notification. See the <i>Android User's Guide</i> .

Turning the phone on and off

You use the power button to turn the phone on and off.



To turn on the phone

- ▶ Press the **Power** button for a few seconds, until the screen illuminates.

The first time you turn on the phone, you're welcomed to Android and prompted to sign into your Google Account. For more information, consult your carrier and the *Android User's Guide*.

When you turn on the phone, you may be prompted to enter a personal identification number (PIN) for your SIM card.

To unblock a SIM

If you enter the wrong PIN three times, the SIM card is blocked and you can't use your phone except to dial an emergency number. You must obtain a PIN Unlocking Key (PUK) from your mobile carrier to unblock the SIM and set a new PIN.

- ▶ Dial the following, replacing "PUK" with the PUK from your carrier and replacing both instances of "PIN" with a 4- to 8-digit PIN of your choosing:

****05*PUK*PIN*PIN#**

To turn off the phone

- 1 Press & hold the **Power** button until a menu opens.
- 2 Touch **Power off** in the menu.
- 3 Touch **OK** when asked to confirm that you want to turn off the phone.

For more about working with the touchscreen and menus, see the *Android User's Guide*.

Specifications

The Nexus One phone features the following specifications. For the location of many of the features in this table, see the diagrams in "Your phone and accessories" on page 5.

The version of the Android mobile technology platform installed on your phone may add or change some of your phone's capabilities. For more information, consult your carrier and the resources at <http://www.google.com/phone>, including the *Android User's Guide*.

Physical dimensions	Height: 119mm Width: 59.8mm Depth: 11.5mm Weight: 130g with battery; 100g without battery
Processor	Qualcomm QSD 8250, 1 GHz
Storage	Flash memory: 512MB RAM: 512MB microSD card: 4GB microSD card included (expandable to 32GB)
Display	3.7-inch (diagonal) widescreen WVGA AMOLED touchscreen 800 x 480 pixels 100,000:1 typical contrast ratio 1ms typical response rate
Power & battery	Removable 1400mAH battery Charges at 480mA from USB, at 980mA from supplied charger Talk time on 2G networks: up to 10 hours Talk time on 3G networks: up to 7 hours Standby time on 2G networks: up to 290 hours Standby time on 3G networks: up to 250 hours Internet use on 3G networks: up to 5 hours Internet use via Wi-Fi: up to 6.5 hours Video playback: up to 7 hours Audio playback: up to 20 hours

Cellular & wireless	<p>Nexus One GSM phones compatible with 3G mobile networks from AT&T (U.S.) and Rogers Wireless (Canada): 3G UMTS bands I/II/V: 2100, 1900, 850 MHz</p> <p>Nexus One GSM phones compatible with 3G mobile networks from T-Mobile (U.S.) and most carriers in Europe and Asia: 3G UMTS bands I/IV/VIII: 2100, 1700(AWS), 900 MHz</p> <p>All Nexus One GSM phones: HSDPA 7.2Mbps HSUPA 2Mbps GSM/EDGE 850, 900, 1800, 1900 MHz Wi-Fi 802.11b/g Bluetooth 2.1 + EDR A2DP stereo Bluetooth</p>
External buttons & controls	<p>Physical Power button Physical Volume Up / Down button Tricolor, clickable trackball 4 illuminated soft buttons (Back ←, Menu ≡, Home ↗, Search 🔍) Haptic feedback</p>
Connectors, sensors, indicators, & audio	<p>Dock pins 3.5mm, 4-conductor, stereo headset jack SIM card slot microSD card slot Micro USB port Proximity sensor Ambient light sensor Tricolor LED next to earpiece for battery charge status Tricolor LED in Trackball for notifications Earpiece Speaker Microphone Second microphone for active noise cancellation</p>
Location	<p>Assisted global positioning system (AGPS) receiver Cell tower and Wi-Fi positioning Digital compass Accelerometer</p>

Camera & flash	<p>5 megapixels</p> <p>Autofocus from 6cm to infinity</p> <p>2X digital zoom</p> <p>LED flash</p> <p>User can include location of photos from phone's AGPS receiver</p> <p>Video captured at 720x480 pixels at 20 frames per second or higher, depending on lighting conditions</p>
Audio decoders	<p>AAC LC/LTP, HE-AACv1 (AAC+), HE-AACv2 (enhanced AAC+)</p> <p>Mono/stereo standard bit rates up to 160kbps and sampling rates from 8kHz to 48kHz</p> <p>AMR-NB 4.75-12.2kbps sampled @ 8kHz</p> <p>AMR-WB 9 rates from 6.60kbit/s to 23.85kbit/s sampled @ 16kHz</p> <p>MP3 mono/stereo 8-320Kbps constant bit rate (CBR) or variable bit rate (VBR)</p> <p>MIDI SMF (Type 0 and 1), DLS Version 1 and 2, XMF/Mobile XMF, RTTTL/RTX, OTA, iMelody</p> <p>Ogg Vorbis</p> <p>WAVE (8-bit and 16-bit PCM)</p>
Audio encoders	AMR-NB 4.75-2.2kbps sampled @ 8kHz
Image formats	<p>JPEG (encode and decode)</p> <p>GIF</p> <p>PNG</p> <p>BMP</p>
Video decoders	<p>H.263</p> <p>MPEG-4 SP</p> <p>H.264 AVC</p>
Video encoders	<p>H.263</p> <p>MPEG-4 SP</p>

