

ENGLISH

Life's Good LG

QUICK START GUIDE

chocolate  
BLACK LABEL SERIES

## Parts of the phone

### Open view

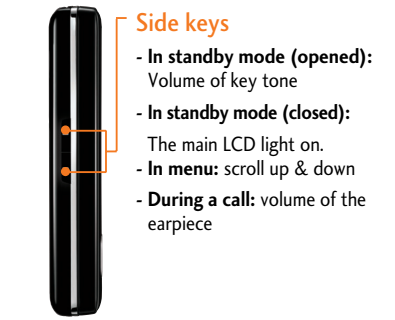
#### Navigation keys

- In standby mode:
  - ▲ Briefly: List of Media
  - ▼ Briefly: List of Contacts
  - ▶ Briefly: List of Messages
  - ◀ Briefly: List of Call history
- In menu: scroll up & down



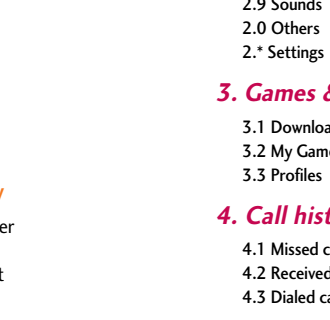
- Earpiece**
- Alpha numeric keys**
  - In standby mode: Input numbers to dial. Hold down 0\* - International calls, \* - Dial Voice mail centre.
  - 2-9 to 8 - Speed dials
  - In editing mode: Enter numbers & characters

### Left side view

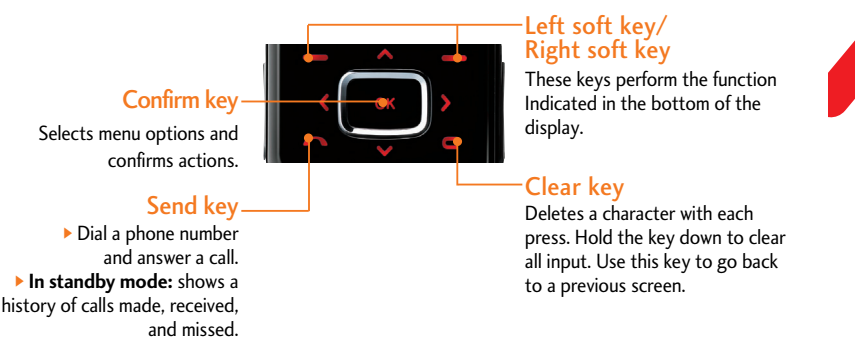


- Side keys**
  - In standby mode (opened): Volume of key tone
  - In standby mode (closed): The main LCD light on.
  - In menu: scroll up & down
  - During a call: volume of the earpiece

### Right side view



- End key**
  - Switch on/off (hold down)
  - End or reject a call.
- Camera/MP3 and Multimedia hot key**
  - Activates the MP3 player (long press) and Multimedia menu (short press) directly.



- Confirm key**
  - Selects menu options and confirms actions.
- Send key**
  - ▶ Dial a phone number and answer a call.
  - ▶ In standby mode: shows a history of calls made, received, and missed.
- Left soft key/Right soft key**
  - These keys perform the function indicated in the bottom of the display.
- Clear key**
  - Deletes a character with each press. Hold the key down to clear all input. Use this key to go back to a previous screen.

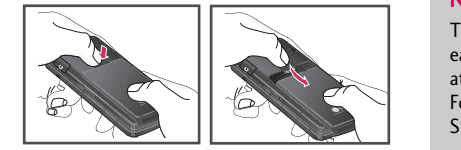
## Menu Tree

- Internet**
  - 1.1 Home
  - 1.2 Bookmarks
  - 1.3 Settings
- Media**
  - 2.1 Camera
  - 2.2 Video camera
  - 2.3 Voice recorder
  - 2.4 MP3 player
  - 2.5 Ring Tunes
  - 2.6 Photo album
  - 2.7 Video album
  - 2.8 Graphics
  - 2.9 Sounds
  - 2.0 Others
  - 2.\* Settings
- Games & Apps**
  - 3.1 Download Games
  - 3.2 My Games & Apps
  - 3.3 Profiles
- Call history**
  - 4.1 Missed calls
  - 4.2 Received calls
  - 4.3 Dialed calls
- Rogers Mail**
  - 5.1 Search
  - 5.2 Music & Tones
  - 5.3 Games
  - 5.4 Graphics
  - 5.5 Email/Chat
  - 5.6 TV/Video
  - 5.7 Caller Ring Trax
  - 5.8 Celebrity Voicemail
  - 5.9 News & Info
  - 5.0 Internet
- Messages**
  - 6.1 New Message
  - 6.2 Inbox
  - 6.3 Drafts
  - 6.4 Outbox
  - 6.5 Listen to voice mail
  - 6.6 Info message
  - 6.7 Templates
  - 6.8 Settings
- Tools**
  - 7.1 Calendar
  - 7.2 Memo
  - 7.3 Alarm clock
  - 7.4 Calculator
  - 7.5 Unit converter
  - 7.6 World time
- Contacts**
  - 8.1 Search contacts
  - 8.2 Add new
  - 8.3 Caller groups
  - 8.4 Speed dial
  - 8.5 Own number
  - 8.6 My business card
  - 8.7 Settings
- Settings**
  - 9.1 Profiles
  - 9.2 Date & time
  - 9.3 Display
  - 9.4 Power saving
  - 9.5 Language
  - 9.6 Connectivity
  - 9.7 Calling
  - 9.8 Security
  - 9.9 Memory status
  - 9.0 Reset settings

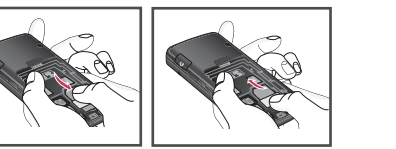
## Installation

### Installing the SIM card and the handset battery

- Make sure the power is off before you remove the battery.
- 1. Remove the battery.** Press and hold down the battery release button and slide the battery down.



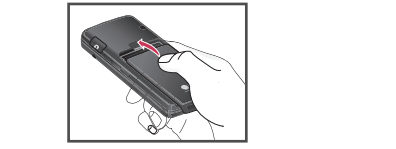
- 2. Install the SIM card.** Insert and slide the SIM card into the SIM card holder. Make sure that the SIM card is inserted properly and that the gold contact area on the card is facing downwards. To remove the SIM card, press down lightly and pull it in the reverse direction.



To insert the SIM card To remove the SIM card

**Note**  
The metal contact of the SIM card can be easily damaged by scratches. Pay special attention to the SIM card while handling. Follow the instructions supplied with the SIM card.

- 3. Install the battery.** Slide the battery upwards until it snaps back into place.



### Making a call

- Make sure your phone is switched on.
- Enter a phone number, including the area code.
  - Press and hold the clear key [C] to erase the entire number.
- Press the send key [S] to call the number.
- To end the call, press the end key [E].

### Making a call from the call history list

- In standby mode, press the send key [S], then the latest incoming, outgoing and missed phone numbers will be displayed.
- Select the desired number by using the up/down navigation keys.
- Press [S] to call the number.

### Charging the Battery

Before connecting the travel adapter to the phone you must first install the battery.



- Ensure the battery is fully charged before using the phone for the first time.
- With the arrow facing you as shown in the diagram push the plug on the battery adapter into the socket on the side of the phone until it clicks into place.
- Connect the other end of the travel adapter to the mains socket. Use only the charger included in the box.
- The moving bars of battery icon will stop after charging is complete.

#### CAUTION!

- Do not force the connector as this may damage the phone and/or the travel adapter.
- If you use the battery pack charger out of your own country, use an attachment plug adaptor for the proper configuration.
- Do not remove your battery or the SIM card while charging.

#### WARNING!

- Unplug the power cord and charger during lightning storms to avoid electric shock or fire.
- Make sure that no sharp-edged items such as animal teeth or nails, come into contact with the battery. There is a risk of this causing a fire.
- Do not place or answer calls while charging the phone as it may short-circuit the phone and/or cause electric shock or fire.

### Disconnecting the charger

Disconnect the travel adapter from the phone as shown in the diagram below.

