

GlobeTrotter Connect

User Guide

Connect anytime, anywhere



TABLE OF CONTENTS

1. SYSTEM REQUIREMENTS	3
2. PRODUCT FEATURES	3
3. SHORT DESCRIPTION AND INTENDED USE	3
3.1. Basic Use	3
4. INSTALLING AND SETTING UP GLOBETROTTER CONNECT	4
4.1. Installation	4
4.2. Installation process	6
4.3. Running GlobeTrotter Connect	6
4.4. Entering your PIN code	7
4.5. Checking Status	7
4.6. Exit GlobeTrotter Connect	8
5. SETTING UP A CONNECTION TO THE INTERNET	8
5.1. Connecting to the Internet	8
5.2. Disconnecting	9
5.3. Changing the program options	9
5.3.1. APN	10
5.3.2. Enable/Disable the Pin Code	10
5.3.3. Technology Selection	11
6. PRODUCT SUPPORT AND ADDITIONAL HELP	11
6.1. Technical Support	11
APPENDIX A: LIMITED WARRANTY	12

1. SYSTEM REQUIREMENTS

Windows® 2000, XP, Vista
5Mb free hard disk space

2. PRODUCT FEATURES

- Easy installation
- Simple intuitive user interface
- Compatible with most modern desktop and laptop PC's equipped with Microsoft Windows® 2000, XP, Vista

3. SHORT DESCRIPTION AND INTENDED USE

The GlobeTrotter Connect application is a small, easy to use tool to manage your connection to the Internet over 2G and 3G mobile networks. It is designed for use with all of Option's data products.

3.1. Basic Use

The focus is on simplicity and most users will use it only in basic mode, where it displays a window with network information and a Connect button. The main purpose is therefore simply to Connect/Disconnect to and from the Internet.



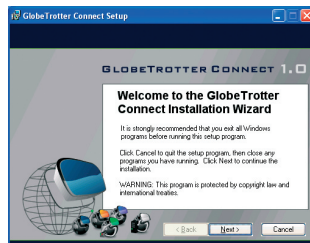
• Figure 1: GlobeTrotter Connect For Basic View

4. INSTALLING AND SETTING UP GLOBETROTTER CONNECT

4.1. Installation

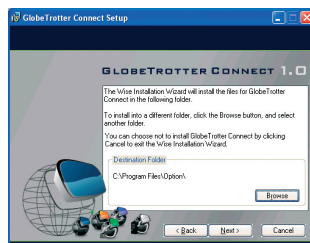
GlobeTrotter Connect can be installed in several ways:

1. You can install it from a CD if provided.
Browse on the CD-ROM and look for **setup.exe**.
Double click it to start the installation. The following screen appears.



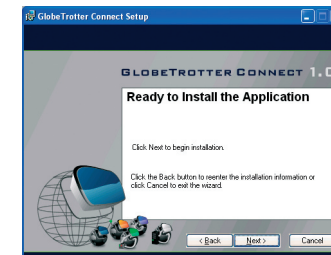
• Figure 2: GlobeTrotter Connect Installation Wizard

Click “Next” to continue the installation and use the Browse button to specify the folder where you want to have the software installed.



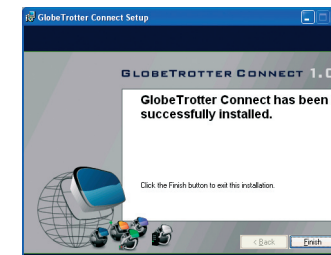
• Figure 3: Specify installation folder

The GlobeTrotter Connect application is now ready for installation. Click “Next” and the actual installation will start.



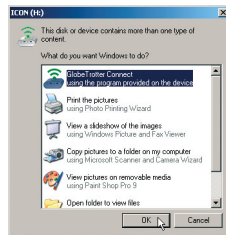
• Figure 4: GlobeTrotter Connect ready to install

After GlobeTrotter Connect is installed, the following screen will be shown. Click “Finish” to close the installation wizard.



• Figure 5: Successfully installed GlobeTrotter Connect

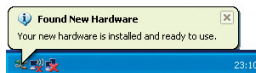
- Download it free from <http://www.option.com/support/login.shtml> and run the installation file. Follow the same procedure as described in 1.
- If your Option data product is equipped with Zero-CD™ technology the application is installed as soon as you connect the product for the first time. In this case you will see the following screen.



• Figure 6: AutolInsert Notification

4.2. Installation process

The installation process is straightforward. Wait until the process is completed. You will see the following balloon to indicate that the process has finished



• Figure 7: Found New Hardware balloon

4.3. Running GlobeTrotter Connect

As soon as you plug in a compatible communications device (Card, USB device...), GlobeTrotter Connect shows up in the Systray.

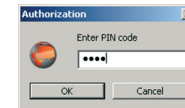


• Figure 8: GlobeTrotter Connect icon

GlobeTrotter Connect is now ready to make a connection. Don't forget that apart from the software the Option communications device also needs to be ready. E.g. you can't use the device while it isn't registered to the network or if the PIN code hasn't been entered yet.

4.4. Entering your PIN code

If you have enabled the PIN code on your SIM card you will automatically be asked to type it in. If enabled you won't be able to use your data device until you have typed in the PIN code. This will happen every time you power up the device.



• Figure 9: Pin Code Dialog

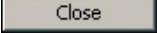

4.5. Checking Status

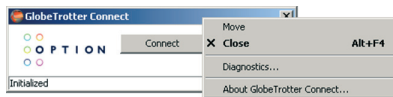
Once the PIN code is entered (or immediately if you have disabled the PIN code) the device will look for the network. You can check the status by moving your mouse pointer over the GlobeTrotter Connect icon to get a quick status report showing the network name, technology being used and the signal quality:



• Figure 10: Network Information Balloon

4.6. Exit GlobeTrotter Connect

When you click  or  this doesn't kill the application. It just retreats to the Systray (see Figure 8: GlobeTrotter Connect icon). This behaviour is equivalent to other Windows applications such as MSN messenger. To terminate the application you must 'Right Click' on the Title Bar and choose Exit.



• Figure 11: Exit GlobeTrotter Connect

5. SETTING UP A CONNECTION TO THE INTERNET

When you want to connect to the Internet you need to specify how you want to connect. You can do this in the settings screen (see the “Changing the program options” section of this manual). As your mobile operator often preconfigures GlobeTrotter Connect for you the settings may already be in there.

5.1. Connecting to the Internet

To connect to the Internet simply click on the 'GlobeTrotter Connect' icon in the Systray (see screenshot) to display its menu. Click “Connect” to start the Internet connection.



• Figure 12: Connect

If software has not been configured, connecting to the Internet will fail. In this case refer to the “Changing the program options” section of this manual.

5.2. Disconnecting

To disconnect, click on the Systray icon to show the menu and select the “Disconnect” option.



• Figure 13: Disconnect

5.3. Changing the program options

Although GlobeTrotter Connect is a simple and straightforward software it has a number of items that need to be configured at least once (either preconfigured by the operator or manually by the user).

To change the settings, launch the Globetrotter Connect main window. You can do this by double clicking on the Systray icon or by selecting “Open GlobeTrotter Connect” from the Systray Icon menu.



• Figure 14: Basic View

Click on “Show settings” to make the configuration options visible.



• Figure 15: Advanced View

5.3.1. APN

The Access Point Name (APN) defines your route to the Internet. Your mobile can supply the APN (some operators may also specify a user name and password if required). Most users will never have to change this setting. If you have given in the APN manually a button saying Automatic will appear next to the Save button. If you press this button the software will try to ‘guess’ your APN based on your SIM.

5.3.2. Enable/Disable the Pin Code

By clicking on ‘Enabled’ or ‘Disabled’ you can enable or disable the PIN code on your SIM. For security reasons you will have to provide the PIN code before you can disable the PIN code. If you enable the PIN code you’ll have to enter a new code.

5.3.3. Technology Selection

Most of the time you should allow your data product to decide what technology to use. Sometimes local conditions will make connecting to the Internet difficult and the default setting “UMTS Preferred” may not give optimum performance.

In these circumstances you can experiment by forcing the data connection on to “UMTS Only” or “GPRS Only”. Remember to switch back the setting to “UMTS Preferred” when conditions change.

6. PRODUCT SUPPORT AND ADDITIONAL HELP

The GlobeTrotter Connect updates will be made available from time to time at: <http://www.option.com/support/login.shtml>

Additional support can be found at: <http://support.option.com/support>

6.1. Technical Support

Questions and answers regarding GlobeTrotter Connect can be found on our Support website: <http://support.option.com/support/faq.php>

Technical questions can be posted after registering through our online Support Web on: <http://support.option.com/support/newticket.php>

For registering please go to: <http://support.option.com/support/register.php>

APPENDIX A: LIMITED WARRANTY

Customer accepts unconditionally, without any warranties, the License on the Software AS IS and without any further claims, demands or requests. OPTION SHALL NOT BE LIABLE TO THE CUSTOMER FOR ANY INDIRECT, INCIDENTAL, CONSEQUENTIAL, PUNITIVE, RELIANCE OR SPECIAL DAMAGES.