



CE0168

LG GW525g | USER GUIDE

Some of content in this user guide may be different from your phone depending on the software of the phone or your service provider. Features and specifications might be subject to change without prior notice.

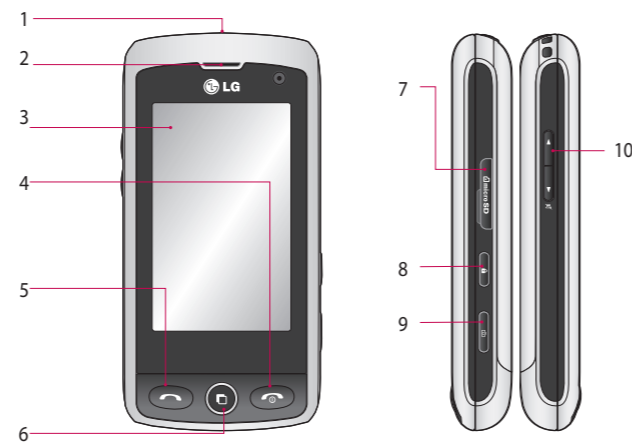


Bluetooth QD ID B015130

Visit www.telusmobility.com/support for a fully illustrated user guide.

P/N: MSAB0045301 (1.0) H

Getting to know your phone



Getting to know your phone (Continued)

- 1. Charger/USB Port**
- 2. Earpiece**
Let's you hear the caller and automated prompts.
- 3. Main LCD**
- 4. Multitasking key**
- 5. SEND key**
Press this key in standby mode to quickly access the most recent, missed, dialed and received calls.
- 6. END/Power**
Ends or rejects a call. Turns the phone on/off. Press once to return to the standby screen.
- 7. microSD™ memory card**
- 8. Lock/Unlock key**
- 9. Camera key**
Press to start the Camera function. Press and hold to start the Video record function.

Getting to know your phone (Continued)

- 10. Side volume keys**
 - When on the Standby screen: Allows you to set the Ringtone and Touchtone volume. Hold the Down key to toggle the Vibration Mode On and Off.
 - During a call: Allows you to change the Earpiece volume.
 - When playing background music: Allows you to change the music volume.

Menu Tree

Touch in the standby screen to open a **Top menu**. From here you can access the following menus: **Communication, Entertainment, Utilities and Settings**

<p> Communication</p> <ul style="list-style-type: none"> 1 Contacts 2 Recent History 3 Messaging 4 Email 5 Dialing 6. Speed Dials 	<p> Entertainment</p> <ul style="list-style-type: none"> 1 Camera 2 Video Camera 3 Gallery 4 My Stuff 5 Music 6 Muvee Studio 7 Games & Apps 8 FM Radio
--	---

Menu Tree (Continued)

<p> Utilities</p> <ul style="list-style-type: none"> 1 Wireless Web 2 Google 3 Alarm 4 Organizer 5 Memo 6 Voice Recorder 7 Tools 	<p> Settings</p> <ul style="list-style-type: none"> 1 Profiles 2 Screen Settings 3 Phone Settings 4 Call Settings 5 Bluetooth 6 Touch Settings 7 Connectivity
--	---

Getting Started

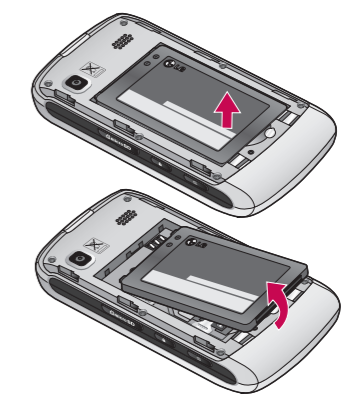
Installing the SIM Card and Battery

- 1. Remove the battery cover**
Press the battery cover release latch. The battery cover should lift off easily.



Getting Started (Continued)

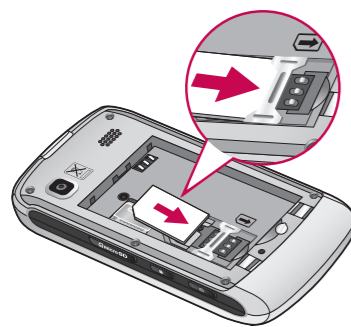
- 2. Remove the battery**
Lever the bottom edge of the battery and remove it carefully from the battery compartment.



⚠ WARNING: Do not remove the battery when the phone is switched on, as this may damage the phone.

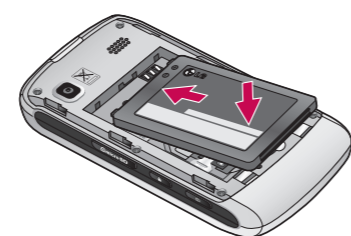
Getting Started (Continued)

- 3. Install the SIM card**
Slide the SIM card into the SIM card holder. Make sure that the gold contact area on the card is facing downward. To remove the SIM card, pull it gently in the opposite direction.



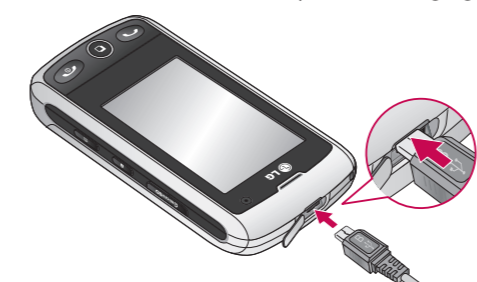
Getting Started (Continued)

- 4. Install the battery**
Insert the top of the battery first into the top edge of the battery compartment. Ensure that the battery contacts align with the terminals on the phone. Press the bottom of the battery down until it clips into place.



Getting Started (Continued)

- 5. Charging your phone**
Lift the charger port cover on the top side of your GW525g. Insert the charger connector to the phone ('B' side of the connector has to be facing up when connecting to the phone) and then plug into the wall socket. Your GW525g will need to be charged until a message reading "Battery full. Please unplug charger to save energy." appears on the screen.
Important! You should insert the battery before charging.



⚠ WARNING: Use of unauthorized accessories could damage your phone and void your warranty

Memory card

- Installing a Memory Card**
You can expand the memory available on your phone by using a microSD™ memory card. The GW525g will support up to a 8 GB microSD™ memory card.
TIP! A memory card is an optional accessory.
- 1.** Lift the memory card cover and insert a microSD™ card with the gold contact area facing downwards. Close the memory card cover so that it clicks shut.



Memory card (Continued)

Note: If your memory card has existing content it will automatically be filed in the correct folder. For example, videos will be accessible from the Videos folder. If your memory card has protected content (i.e. content such as songs or graphics with Digital Rights Management copywriting loaded from another device), it will not work. You will need to reformat the memory card prior to using it with this device.

See also: Memory card

Other Medical Devices

If you use any other personal medical device, consult the manufacturer of your device to determine if it is adequately shielded from external RF energy. Your physician may be able to assist you in obtaining this information.

Health Care Facilities

Turn your phone OFF in health care facilities when any regulations posted in these areas instruct you to do so. Hospitals or health care facilities may use equipment that could be sensitive to external RF energy.

Vehicles

RF signals may affect improperly installed or inadequately shielded electronic systems in motor vehicles. Check with the manufacturer or its representative regarding your vehicle. You should also consult the manufacturer of any equipment that has been added to your vehicle.

Posted Facilities

Turn your phone OFF in any facility where posted notices so require.

Aircraft

FCC and Transport Canada regulations prohibit using your phone while in the air. Switch OFF your phone before boarding an aircraft.

Blasting Areas
To avoid interfering with blasting operations, turn your phone OFF when in a "blasting area" or in areas posted: "Turn off two-way radio". Obey all signs and instructions.

Potentially Explosive Atmosphere

Turn your phone OFF when in any area with a potentially explosive atmosphere and obey all signs and instructions. Sparks in such areas could cause an explosion or fire resulting in bodily injury or even death.

Areas with a potentially explosive atmosphere are often, but not always marked clearly. Potential areas may include: fueling areas (such as gasoline stations); below deck on boats; fuel or chemical transfer or storage facilities; vehicles using liquefied petroleum gas (such as propane or butane); areas where the air contains chemicals or particles (such as grain, dust, or metal powders); and any other area where you would normally be advised to turn

off your vehicle engine.

For Vehicles Equipped with an Air Bag
An air bag inflates with great force. DO NOT place objects, including either installed or portable wireless equipment, in the area over the air bag or in the air bag deployment area. If in-vehicle wireless equipment is improperly installed and the air bag inflates, serious injury could result.

Charger and Adapter Safety

• The charger and adapter are intended for indoor use only.
• Do not expose the battery charger or adapter to direct sunlight or use it in places with high humidity, such as a bathroom.

Battery Information and Care

- Please dispose of your battery properly or take it to your local wireless carrier for recycling.
- Do not dispose of your battery by fire or with hazardous or flammable materials.
- Never use an unapproved battery since this could damage the phone and/or battery and could cause the battery to explode.
- The battery does not need to be fully discharged before recharging.
- Use only LG-approved chargers specific to your phone model since they are designed to maximize battery life.
- Do not disassemble or shortcircuit the battery.
- Keep the battery's metal contacts clean.
- Replace the battery when it no longer provides acceptable performance. The battery can be recharged several hundred times before replacement.
- Recharge the battery after long periods of non-use to maximize battery life.
- Battery life will vary due to usage patterns and environmental conditions.
- Use of extended backlighting, MiniBrowser, and data connectivity kits affect battery life and talk/standby times.

off your vehicle engine.

For Vehicles Equipped with an Air Bag
An air bag inflates with great force. DO NOT place objects, including either installed or portable wireless equipment, in the area over the air bag or in the air bag deployment area. If in-vehicle wireless equipment is improperly installed and the air bag inflates, serious injury could result.

Charger and Adapter Safety

• The charger and adapter are intended for indoor use only.
• Do not expose the battery charger or adapter to direct sunlight or use it in places with high humidity, such as a bathroom.

Battery Information and Care

- Please dispose of your battery properly or take it to your local wireless carrier for recycling.
- Do not dispose of your battery by fire or with hazardous or flammable materials.
- Never use an unapproved battery since this could damage the phone and/or battery and could cause the battery to explode.
- The battery does not need to be fully discharged before recharging.
- Use only LG-approved chargers specific to your phone model since they are designed to maximize battery life.
- Do not disassemble or shortcircuit the battery.
- Keep the battery's metal contacts clean.
- Replace the battery when it no longer provides acceptable performance. The battery can be recharged several hundred times before replacement.
- Recharge the battery after long periods of non-use to maximize battery life.
- Battery life will vary due to usage patterns and environmental conditions.
- Use of extended backlighting, MiniBrowser, and data connectivity kits affect battery life and talk/standby times.

Safety (Continued)

Other Medical Devices

If you use any other personal medical device, consult the manufacturer of your device to determine if it is adequately shielded from external RF energy. Your physician may be able to assist you in obtaining this information.

Health Care Facilities
Turn your phone OFF in health care facilities when any regulations posted in these areas instruct you to do so. Hospitals or health care facilities may use equipment that could be sensitive to external RF energy.

Vehicles
RF signals may affect improperly installed or inadequately shielded electronic systems in motor vehicles. Check with the manufacturer or its representative regarding your vehicle. You should also consult the manufacturer of any equipment that has been added to your vehicle.

Posted Facilities
Turn your phone OFF in any facility where posted notices so require.

Aircraft

FCC and Transport Canada regulations prohibit using your phone while in the air. Switch OFF your phone before boarding an aircraft.

Blasting Areas
To avoid interfering with blasting operations, turn your phone OFF when in a "blasting area" or in areas posted: "Turn off two-way radio". Obey all signs and instructions.

Potentially Explosive Atmosphere
Turn your phone OFF when in any area with a potentially explosive atmosphere and obey all signs and instructions. Sparks in such areas could cause an explosion or fire resulting in bodily injury or even death.

Areas with a potentially explosive atmosphere are often, but not always marked clearly. Potential areas may include: fueling areas (such as gasoline stations); below deck on boats; fuel or chemical transfer or storage facilities; vehicles using liquefied petroleum gas (such as propane or butane); areas where the air contains chemicals or particles (such as grain, dust, or metal powders); and any other area where you would normally be advised to turn

off your vehicle engine.

For Vehicles Equipped with an Air Bag
An air bag inflates with great force. DO NOT place objects, including either installed or portable wireless equipment, in the area over the air bag or in the air bag deployment area. If in-vehicle wireless equipment is improperly installed and the air bag inflates, serious injury could result.

Charger and Adapter Safety
• The charger and adapter are intended for indoor use only.
• Do not expose the battery charger or adapter to direct sunlight or use it in places with high humidity, such as a bathroom.

Battery Information and Care
• Please dispose of your battery properly or take it to your local wireless carrier for recycling.

• Do not dispose of your battery by fire or with hazardous or flammable materials.
• Never use an unapproved battery since this could damage the phone and/or battery and could cause the battery to explode.
• The battery does not need to be fully discharged before recharging.
• Use only LG-approved chargers specific to your phone model since they are designed to maximize battery life.
• Do not disassemble or shortcircuit the battery.
• Keep the battery's metal contacts clean.
• Replace the battery when it no longer provides acceptable performance. The battery can be recharged several hundred times before replacement.
• Recharge the battery after long periods of non-use to maximize battery life.
• Battery life will vary due to usage patterns and environmental conditions.
• Use of extended backlighting, MiniBrowser, and data connectivity kits affect battery life and talk/standby times.

Touch Calibration

Set your touch screen for ease of use. Touch **Start** and press the '+' markers to calibrate the screen.



See also: Touch calibration

Safety (Continued)

Other Medical Devices

If you use any other personal medical device, consult the manufacturer of your device to determine if it is adequately shielded from external RF energy. Your physician may be able to assist you in obtaining this information.

Health Care Facilities

Turn your phone OFF in health care facilities when any regulations posted in these areas instruct you to do so. Hospitals or health care facilities may use equipment that could be sensitive to external RF energy.

Vehicles
RF signals may affect improperly installed or inadequately shielded electronic systems in motor vehicles. Check with the manufacturer or its representative regarding your vehicle. You should also consult the manufacturer of any equipment that has been added to your vehicle.

Posted Facilities

Turn your phone OFF in any facility where posted notices so require.

Aircraft

FCC and Transport Canada regulations prohibit using your phone while in the air. Switch OFF your phone before boarding an aircraft.

Blasting Areas
To avoid interfering with blasting operations, turn your phone OFF when in a "blasting area" or in areas posted: "Turn off two-way radio". Obey all signs and instructions.

Potentially Explosive Atmosphere
Turn your phone OFF when in any area with a potentially explosive atmosphere and obey all signs and instructions. Sparks in such areas could cause an explosion or fire resulting in bodily injury or even death.

Areas with a potentially explosive atmosphere are often, but not always marked clearly. Potential areas may include: fueling areas (such as gasoline stations); below deck on boats; fuel or chemical transfer or storage facilities; vehicles using liquefied petroleum gas (such as propane or butane); areas where the air contains chemicals or particles (such as grain, dust, or metal powders); and any other area where you would normally be advised to turn

off your vehicle engine.

For Vehicles Equipped with an Air Bag
An air bag inflates with great force. DO NOT place objects, including either installed or portable wireless equipment, in the area over the air bag or in the air bag deployment area. If in-vehicle wireless equipment is improperly installed and the air bag inflates, serious injury could result.

Charger and Adapter Safety
• The charger and adapter are intended for indoor use only.
• Do not expose the battery charger or adapter to direct sunlight or use it in places with high humidity, such as a bathroom.

Battery Information and Care
• Please dispose of your battery properly or take it to your local wireless carrier for recycling.

- Do not dispose of your battery by fire or with hazardous or flammable materials.
- Never use an unapproved battery since this could damage the phone and/or battery and could cause the battery to explode.
- The battery does not need to be fully discharged before recharging.
- Use only LG-approved chargers specific to your phone model since they are designed to maximize battery life.
- Do not disassemble or shortcircuit the battery.
- Keep the battery's metal contacts clean.
- Replace the battery when it no longer provides acceptable performance. The battery can be recharged several hundred times before replacement.
- Recharge the battery after long periods of non-use to maximize battery life.
- Battery life will vary due to usage patterns and environmental conditions.
- Use of extended backlighting, MiniBrowser, and data connectivity kits affect battery life and talk/standby times.

off your vehicle engine.

For Vehicles Equipped with an Air Bag
An air bag inflates with great force. DO NOT place objects, including either installed or portable wireless equipment, in the area over the air bag or in the air bag deployment area. If in-vehicle wireless equipment is improperly installed and the air bag inflates, serious injury could result.

Charger and Adapter Safety
• The charger and adapter are intended for indoor use only.
• Do not expose the battery charger or adapter to direct sunlight or use it in places with high humidity, such as a bathroom.

Battery Information and Care
• Please dispose of your battery properly or take it to your local wireless carrier for recycling.

• Do not dispose of your battery by fire or with hazardous or flammable materials.
• Never use an unapproved battery since this could damage the phone and/or battery and could cause the battery to explode.
• The battery does not need to be fully discharged before recharging.
• Use only LG-approved chargers specific to your phone model since they are designed to maximize battery life.
• Do not disassemble or shortcircuit the battery.
• Keep the battery's metal contacts clean.
• Replace the battery when it no longer provides acceptable performance. The battery can be recharged several hundred times before replacement.
• Recharge the battery after long periods of non-use to maximize battery life.
• Battery life will vary due to usage patterns and environmental conditions.
• Use of extended backlighting, MiniBrowser, and data connectivity kits affect battery life and talk/standby times.

off your vehicle engine.

For Vehicles Equipped with an Air Bag
An air bag inflates with great force. DO NOT place objects, including either installed or portable wireless equipment, in the area over the air bag or in the air bag deployment area. If in-vehicle wireless equipment is improperly installed and the air bag inflates, serious injury could result.

Charger and Adapter Safety
• The charger and adapter are intended for indoor use only.
• Do not expose the battery charger or adapter to direct sunlight or use it in places with high humidity, such as a bathroom.

Battery Information and Care
• Please dispose of your battery properly or take it to your local wireless carrier for recycling.

• Do not dispose of your battery by fire or with hazardous or flammable materials.
• Never use an unapproved battery since this could damage the phone and/or battery and could cause the battery to explode.
• The battery does not need to be fully discharged before recharging.
• Use only LG-approved chargers specific to your phone model since they are designed to maximize battery life.
• Do not disassemble or shortcircuit the battery.
• Keep the battery's metal contacts clean.
• Replace the battery when it no longer provides acceptable performance. The battery can be recharged several hundred times before replacement.
• Recharge the battery after long periods of non-use to maximize battery life.
• Battery life will vary due to usage patterns and environmental conditions.
• Use of extended backlighting, MiniBrowser, and data connectivity kits affect battery life and talk/standby times.

off your vehicle engine.

For Vehicles Equipped with an Air Bag
An air bag inflates with great force. DO NOT place objects, including either installed or portable wireless equipment, in the area over the air bag or in the air bag deployment area. If in-vehicle wireless equipment is improperly installed and the air bag inflates, serious injury could result.

Charger and Adapter Safety
• The charger and adapter are intended for indoor use only.
• Do not expose the battery charger or adapter to direct sunlight or use it in places with high humidity, such as a bathroom.

Battery Information and Care
• Please dispose of your battery properly or take it to your local wireless carrier for recycling.

• Do not dispose of your battery by fire or with hazardous or flammable materials.
• Never use an unapproved battery since this could damage the phone and/or battery and could cause the battery to explode.
• The battery does not need to be fully discharged before recharging.
• Use only LG-approved chargers specific to your phone model since they are designed to maximize battery life.
• Do not disassemble or shortcircuit the battery.
• Keep the battery's metal contacts clean.
• Replace the battery when it no longer provides acceptable performance. The battery can be recharged several hundred times before replacement.
• Recharge the battery after long periods of non-use to maximize battery life.
• Battery life will vary due to usage patterns and environmental conditions.
• Use of extended backlighting, MiniBrowser, and data connectivity kits affect battery life and talk/standby times.

off your vehicle engine.

For Vehicles Equipped with an Air Bag
An air bag inflates with great force. DO NOT place objects, including either installed or portable wireless equipment, in the area over the air bag or in the air bag deployment area. If in-vehicle wireless equipment is improperly installed and the air bag inflates, serious injury could result.

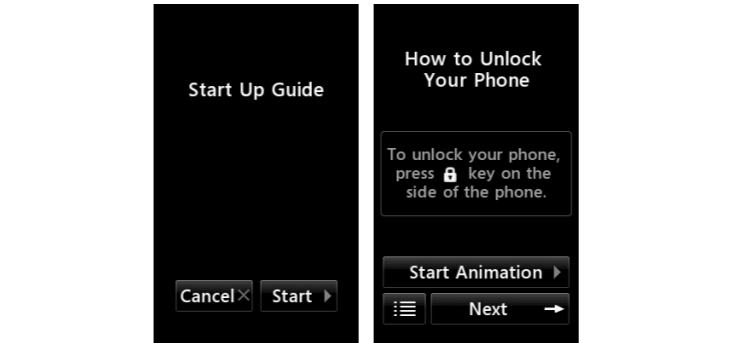
Charger and Adapter Safety
• The charger and adapter are intended for indoor use only.
• Do not expose the battery charger or adapter to direct sunlight or use it in places with high humidity, such as a bathroom.

Battery Information and Care
• Please dispose of your battery properly or take it to your local wireless carrier for recycling.

• Do not dispose of your battery by fire or with hazardous or flammable materials.
• Never use an unapproved battery since this could damage the phone and/or battery and could cause the battery to explode.
• The battery does not need to be fully discharged before recharging.
• Use only LG-approved chargers specific to your phone model since they are designed to maximize battery life.
• Do not disassemble or shortcircuit the battery.
• Keep the battery's metal contacts clean.
• Replace the battery when it no longer provides acceptable performance. The battery can be recharged several hundred times before replacement.
• Recharge the battery after long periods of non-use to maximize battery life.
• Battery life will vary due to usage patterns and environmental conditions.
• Use of extended backlighting, MiniBrowser, and data connectivity kits affect battery life and talk/standby times.

Start Up Guide

After you install SIM card and battery, and turn on the GW525g, you will see Start Up Guide on the screen.



See also: Start up guide

Touch Start

Other Medical Devices

If you use any other personal medical device, consult the manufacturer of your device to determine if it is adequately shielded from external RF energy. Your physician may be able to assist you in obtaining this information.

Health Care Facilities
Turn your phone OFF in health care facilities when any regulations posted in these areas instruct you to do so. Hospitals or health care facilities may use equipment that could be sensitive to external RF energy.

Vehicles
RF signals may affect improperly installed or inadequately shielded electronic systems in motor vehicles. Check with the manufacturer or its representative regarding your vehicle. You should also consult the manufacturer of any equipment that has been added to your vehicle.

Posted Facilities
Turn your phone OFF in any facility where posted notices so require.

Aircraft
FCC and Transport Canada regulations prohibit using your phone while in the air. Switch OFF your phone before boarding an aircraft.

Blasting Areas
To avoid interfering with blasting operations, turn your phone OFF when in a "blasting area" or in areas posted: "Turn off two-way radio". Obey all signs and instructions.

Potentially Explosive Atmosphere
Turn your phone OFF when in any area with a potentially explosive atmosphere and obey all signs and instructions. Sparks in such areas could cause an explosion or fire resulting in bodily injury or even death.

Areas with a potentially explosive atmosphere are often, but not always marked clearly. Potential areas may include: fueling areas (such as gasoline stations); below deck on boats; fuel or chemical transfer or storage facilities; vehicles using liquefied petroleum gas (such as propane or butane); areas where the air contains chemicals or particles (such as grain, dust, or metal powders); and any other area where you would normally be advised to turn

off your vehicle engine.

For Vehicles Equipped with an Air Bag
An air bag inflates with great force. DO NOT place objects, including either installed or portable wireless equipment, in the area over the air bag or in the air bag deployment area. If in-vehicle wireless equipment is improperly installed and the air bag inflates, serious injury could result.

Charger and Adapter Safety
• The charger and adapter are intended for indoor use only.
• Do not expose the battery charger or adapter to direct sunlight or use it in places with high humidity, such as a bathroom.

Battery Information and Care
• Please dispose of your battery properly or take it to your local wireless carrier for recycling.

- Do not dispose of your battery by fire or with hazardous or flammable materials.
- Never use an unapproved battery since this could damage the phone and/or battery and could cause the battery to explode.
- The battery does not need to be fully discharged before recharging.
- Use only LG-approved chargers specific to your phone model since they are designed to maximize battery life.
- Do not drop, strike, or shake your phone severely. Such actions may harm the internal circuit boards of the phone.
- Do not put your phone in a place subject to excessive dust and keep the minimum required distance between the power cord and heat sources.
- Unplug the power cord prior to cleaning your phone, and clean the power plug pin when it is dirty.
- Do not damage the power cord by bending, twisting, pulling, or heating. Do not use the plug if it is loose as it may cause a fire or electric shock.
- When using the power plug, ensure that it is firmly connected. If it is not, it may cause excessive heat or fire.
- Do not place any heavy items on the power cord. Do not allow the power cord to be crimped as it may cause fire or electric shock.
- Do not disassemble the phone.
- Do not place or answer calls while charging the phone as it may short-circuit the phone and/or cause electric shock or fire.
- If you put your phone in a pocket or bag without covering the receptacle of the phone (power plug pin), metallic articles (such as a coin, paperclip or pen) may short-circuit the phone. Always cover the receptacle when not in use.

off your vehicle engine.

For Vehicles Equipped with an Air Bag
An air bag inflates with great force. DO NOT place objects, including either installed or portable wireless equipment, in the area over the air bag or in the air bag deployment area. If in-vehicle wireless equipment is improperly installed and the air bag inflates, serious injury could result.

Charger and Adapter Safety
• The charger and adapter are intended for indoor use only.
• Do not expose the battery charger or adapter to direct sunlight or use it in places with high humidity, such as a bathroom.

Battery Information and Care
• Please dispose of your battery properly or take it to your local wireless carrier for recycling.

• Do not dispose of your battery by fire or with hazardous or flammable materials.
• Never use an unapproved battery since this could damage the phone and/or battery and could cause the battery to explode.
• The battery does not need to be fully discharged before recharging.
• Use only LG-approved chargers specific to your phone model since they are designed to maximize battery life.
• Do not drop, strike, or shake your phone severely. Such actions may harm the internal circuit boards of the phone.

Safety (Continued)

If you use any other personal medical device, consult the manufacturer of your device to determine if it is adequately shielded from external RF energy. Your physician may be able to assist you in obtaining this information.

Health Care Facilities
Turn your phone OFF in health care facilities when any regulations posted in these areas instruct you to do so. Hospitals or health care facilities may use equipment that could be sensitive to external RF energy.

Vehicles
RF signals may affect improperly installed or inadequately shielded electronic systems in motor vehicles. Check with the manufacturer or its representative regarding your vehicle. You should also consult the manufacturer of any equipment that has been added to your vehicle.

Posted Facilities
Turn your phone OFF in any facility where posted notices so require.

Aircraft
FCC and Transport Canada regulations prohibit using your phone while in the air. Switch OFF your phone before boarding an aircraft.

Blasting Areas
To avoid interfering with blasting operations, turn your phone OFF when in a "blasting area" or in areas posted: "Turn off two-way radio". Obey all signs and instructions.

Potentially Explosive Atmosphere
Turn your phone OFF when in any area with a potentially explosive atmosphere and obey all signs and instructions. Sparks in such areas could cause an explosion or fire resulting in bodily injury or even death.

Areas with a potentially explosive atmosphere are often, but not always marked clearly. Potential areas may include: fueling areas (such as gasoline stations); below deck on boats; fuel or chemical transfer or storage facilities; vehicles using liquefied petroleum gas (such as propane or butane); areas where the air contains chemicals or particles (such as grain, dust, or metal powders); and any other area where you would normally be advised to turn

off your vehicle engine.

For Vehicles Equipped with an Air Bag
An air bag inflates with great force. DO NOT place objects, including either installed or portable wireless equipment, in the area over the air bag or in the air bag deployment area. If in-vehicle wireless equipment is improperly installed and the air bag inflates, serious injury could result.

Charger and Adapter Safety
• The charger and adapter are intended for indoor use only.
• Do not expose the battery charger or adapter to direct sunlight or use it in places with high humidity, such as a bathroom.

Battery Information and Care
• Please dispose of your battery properly or take it to your local wireless carrier for recycling.

- Do not dispose of your battery by fire or with hazardous or flammable materials.
- Never use an unapproved battery since this could damage the phone and/or battery and could cause the battery to explode.
- The battery does not need to be fully discharged before recharging.
- Use only LG-approved chargers specific to your phone model since they are designed to maximize battery life.
- Do not drop, strike, or shake your phone severely. Such actions may harm the internal circuit boards of the phone.
- Do not put your phone in a place subject to excessive dust and keep the minimum required distance between the power cord and heat sources.
- Unplug the power cord prior to cleaning your phone, and clean the power plug pin when it is dirty.
- Do not damage the power cord by bending, twisting, pulling, or heating. Do not use the plug if it is loose as it may cause a fire or electric shock.
- When using the power plug, ensure that it is firmly connected. If it is not, it may cause excessive heat or fire.
- Do not place any heavy items on the power cord. Do not allow the power cord to be crimped as it may cause fire or electric shock.
- Do not disassemble the phone.
- Do not place or answer calls while charging the phone as it may short-circuit the phone and/or cause electric shock or fire.
- If you put your phone in a pocket or bag without covering the receptacle of the phone (power plug pin), metallic articles (such as a coin, paperclip or pen) may short-circuit the phone. Always cover the receptacle when not in use.

off your vehicle engine.

Safety

TIA(Telecommunications Industry Association) Safety Information
The following is the complete TIA Safety Information for wireless handheld phones.

Exposure to Radio Frequency Signal
Your wireless handheld portable phone is a low power radio transmitter and receiver. When it is ON, it receives and also sends out Radio Frequency (RF) signals. In August, 1996, the Federal Communications Commissions (FCC) adopted RF exposure guidelines with safety levels for handheld wireless phones. Those guidelines are consistent with the safety standards previously set by both U.S. and international standards bodies:

- ANSI C95.1 (1992) *
- NCRP Report 86 (1986)
- ICNIRP (1996)

* Health Canada, Safety Code 6, 1999.

Those standards were based on comprehensive and periodic evaluations of the relevant scientific literature. For example, over 120 scientists, engineers, and physicians from universities, government health agencies, and industry reviewed the available body of research to develop the ANSI Standard (C95.1). The design of your phone complies with the FCC guidelines, IC Regulations (and those standards).

Antenna Care
Use only the supplied or an approved replacement antenna. Unauthorised antennas, modifications, or attachments could damage the phone and may violate FCC regulations.

Phone Operation
NORMAL POSITION: Hold the phone as you would any other telephone with the antenna pointed up and over your shoulder.

Tips on Efficient Operation
For your phone to operate most efficiently:
Do not touch the antenna unnecessarily when the phone is in use. Contact with the antenna affects call quality and may cause the phone to operate at a higher power level than otherwise needed.

Driving
Check the laws and regulations on the use of reless phones in the areas where you drive and always obey them. Also, if using your phone while driving, please observe the following:

- Use hands-free operation, if available;
- Pull off the road and park before making or answering a call if driving conditions or the law so require.

Electronic Devices
Most modern electronic equipment is shielded from RF signals. However, certain electronic equipment may not be shielded against the RF signals from your wireless phone.

Pacemakers
The Health Industry Manufacturers Association recommends that a minimum separation of six inches be maintained between a handheld wireless phone and a pacemaker to avoid potential interference with the pacemaker. These recommendations are consistent with the independent research by and recommendations of Wireless Technology Research.

Persons with Pacemakers:
• Should ALWAYS keep the phone more than six inches from their pacemaker when the phone is turned ON.
• Should not carry the phone in a breast pocket;

- Should use the ear opposite the pacemaker to minimize the potential for interference;
- Should turn the phone OFF immediately if there is any reason to suspect that interference is taking place.

Hearing Aids
Some digital wireless phones may interfere with some hearing aids. In the event of such interference, you may want to consult your service provider (or call the customer service line to discuss alternatives.) Optional for each phone manufacturer.

Safety (Continued)

If you use any other personal medical device, consult the manufacturer of your device to determine if it is adequately shielded from external RF energy. Your physician may be able to assist you in obtaining this information.

Health Care Facilities
Turn your phone OFF in health care facilities when any regulations posted in these areas instruct you to do so. Hospitals or health care facilities may use equipment that could be sensitive to external RF energy.

Vehicles
RF signals may affect improperly installed or inadequately shielded electronic systems in motor vehicles. Check with the manufacturer or its representative regarding your vehicle. You should also consult the manufacturer of any equipment that has been added to your vehicle.

Posted Facilities
Turn your phone OFF in any facility where posted notices so require.

Aircraft
FCC and Transport Canada regulations prohibit using your phone while in the air. Switch OFF your phone before boarding an aircraft.

Blasting Areas
To avoid interfering with blasting operations, turn your phone OFF when in a "blasting area" or in areas posted: "Turn off two-way radio". Obey all signs and instructions.

Potentially Explosive Atmosphere
Turn your phone OFF when in any area with a potentially explosive atmosphere and obey all signs and instructions. Sparks in such areas could cause an explosion or fire resulting in bodily injury or even death.