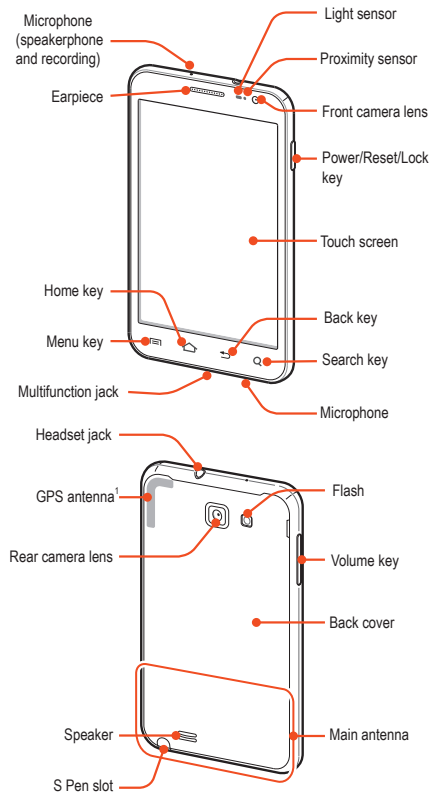
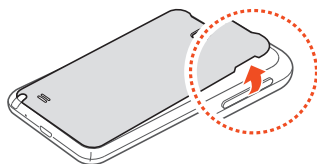


## LEARNING THE BASICS

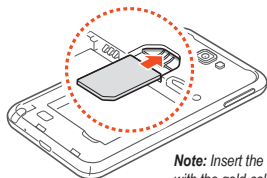


## INSERT SIM CARD

1. Turn the phone off and remove the back cover.

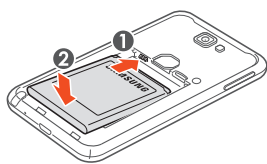


2. Insert the SIM card.



**Note:** Insert the SIM card with the gold-coloured contacts facing down.

3. Insert the battery.

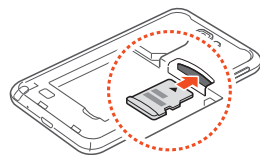


4. Replace the back cover.

## INSERT MEMORY CARD

To store additional files, insert a memory card. Your device accepts microSD™ or microSDHC™ memory cards with 32 GB maximum capacity.

1. Remove the back cover and battery.
2. Insert a memory card with the gold-coloured contacts facing downwards.



3. Push the memory card into the memory card slot until it locks in place.
4. Replace the battery and back cover.

## CHARGE THE BATTERY

1. Plug the small end of the travel adapter into the multifunction jack on the bottom of the phone.
2. Plug the large end of the travel adapter into a power outlet.
3. When the battery is fully charged (battery icon is no longer moving), unplug the travel adapter from the phone and then from the power outlet.

## TURN ON/OFF

To turn on your device, press and hold the Power key. To turn off your device, press and hold the Power key, and select **Power off** → **OK**.


## IDLE SCREEN

When the device is in Idle mode, you will see the idle screen. From the idle screen, you can view indicator icons, widgets, shortcuts to applications, and other items.

To scroll through the Idle screen, drag left or right to view the hidden areas of the Idle screen. You can also select a dot at the bottom of the screen to move directly to a panel.

## LOCK SCREEN AND KEYS

You can lock the touch screen and keys to prevent any unwanted device operations.


To lock, press the Power key. To unlock, turn on the screen by pressing the Power key, tap anywhere on the screen, and then drag  outside of the large circle.

## S PEN

The S Pen can be removed from the slot at the bottom of the device and used to perform screen operations such as Back (tap and drag left), Menu (tap and drag up), Screen Capture (tap and hold), and Quick Memo (double-tap).

## MAKE OR ANSWER A CALL

You can make a call by entering a phone number or selecting a number in your contact list. You can also access the call log to dial recent numbers.

**Make a call:** Open the dialing screen, enter a phone number, and select .

**Answer a call:** When a call comes in, drag  right.

## VOICE MAIL

If you set missed calls to be diverted to the voice mail server, callers can leave voice messages when you do not answer incoming calls. To access your voice mail inbox and listen to your messages, open the application list, select **Phone** → **Keypad**, and then tap and hold 1.

## ENTER TEXT

You can enter text with the virtual keypads or in handwriting mode. You can also use editing options to copy and paste text.

## Swype keypad

With the Swype keypad, you can enter text by sliding across characters on the keypad. Tap the first character of a word, drag to the following characters, and lift your finger on the last character.



## Samsung keypad

The Samsung keypad provides different keypad types (such as QWERTY and 3x4 keypads).

When using the QWERTY or 3x4 keypad, you can use the predictive text feature to predict the word you are entering and display suggestions.

**TIP:** When entering text, rotate the device to display the keypad in a widescreen layout.

## Handwriting mode

From the Samsung keypad, you can switch to Handwriting mode to enter text. To switch to Handwriting mode, select . Write your text on the handwriting panel. To switch to the Samsung keypad, select .

## TECHNICAL SPECIFICATIONS

### Network:

- LTE 100Mbps
- HSDPA 21Mbps
- HSUPA 5.76Mbps
- EDGE/GPRS Class 10

**Dimensions:** 146.85 x 82.95 x 9.65 mm

**Weight:** 180g

**Display:** 5.29" WXGA (1280x800) sAMOLED HD

**Battery:** Li-Ion 2500mAh

### Memory:

- 8Gb (LPDDR) + 512Mb (mDRAM)
- 16GB MoviNAND

### Connectivity:

- WiFi 802.11 a/b/g/n (2.4GHz / 5GHz)
- USB 2.0, BT v3.0 HS
- USB OTG

**Camera:** 8M AF w/LED + 2M FF VT

### Bluetooth:

- Bluetooth v3.0 HS
- Supports GAP, SSP, SDAP, HSP, HFP1.5, A2DP, AVRCP 1.3, SPP, OPP, PBAP

**Expandable Memory:** microSD (up to 32GB)

**Operating System:** Android Gingerbread

## THE FINE PRINT

### Samsung Electronics Canada Inc.

Customer Care Centre

1.800.SAMSUNG



www.samsung.ca

Many of the services and features described herein are network dependent and may require additional subscription and/or usage charges. Not all features are available for purchase or use in all areas.

Please Note: Standby and talk times will vary depending on phone usage patterns and conditions. Battery power consumption depends on factors such as network configuration, signal strength, operating temperature, features selected, frequency of call, and voice, data and other application usage patterns.

Compatibility with all Bluetooth® equipment is not guaranteed. The Bluetooth technology trademarks are owned by Bluetooth SIG, Inc., Canada and used by Samsung Electronics Co. Ltd. under license.

Wi-Fi®, the Wi-Fi CERTIFIED logo, and the Wi-Fi logo are registered trademarks of the Wi-Fi Alliance.

© 2012 Samsung Electronics Canada Inc. All rights reserved. Samsung is a registered trademark of Samsung Electronics Co. Ltd. and its related entities. Specifications subject to change without notice.



GH68-36323A



## WIDGETS

You can use widgets that provide convenient functions and information on your idle screen.

## NOTIFICATIONS PANEL

From the notifications panel, you can use shortcut menus and access a list of notifications for messages, calls, events, or processing status. Tap the indicator icons area at the top of the screen and drag your finger downwards to open the notifications panel. To hide the panel, drag the bottom of the list upwards.

## SCREEN LOCK

You can lock the touch screen by activating the screen lock setting. Your device will require the unlock pattern, PIN, or password each time you turn on the device or unlock the touch screen.

## SILENT MODE

To mute or unmute your device, do one of the following:

- In Idle mode, open the application list and select **Phone** → **Keypad**, and then tap and hold the # key.
- Press and hold the Power key and select **Silent mode**.
- Open the notifications panel at the top of the screen and select **Silent mode**.

You can set the device to alert you to various events in Silent mode. Select **Settings** → **Sound** → **Vibration** → **Always** or **Only in silent mode**.

## USE MOTIONS

Motion recognition provides you with enhanced controls. You can perform actions by moving your device or performing gestures with your hands.

**Shake:** Shake your device to search for Bluetooth-enabled devices

**Double-tap:** While using Voice talk, begin voice recognition by tapping the device twice quickly.

**Tilt:** While holding the device with two hands, tap and hold two points on the screen, then tilt the device back and forth to zoom in or out.

**Palm sweep:** Sweep your palm across the screen to capture a screen shot.

**Palm touch:** Touch the screen with your palm to pause media playback or mute the radio.

**Tap and twist:** Place your finger on the screen and then twist it to rotate an image.

**Pan:** Tap and hold an item on the screen, and then pan the device to the left or right to move the item to another page on the idle screen or application list.

**Turn over:** Place the device face down to mute ringtones.

## APPLICATIONS

1. In Idle mode, select **Applications** to access the applications list.
2. Select an application.

Press and hold the Home key to view recently accessed applications.

## VOICE TALK

Voice recognition lets you launch applications and features when your hands are engaged with other tasks or you are not able to look at the device's screen, such as while you are driving.

## MESSAGING

You can create and send text (SMS), multimedia (MMS), or email messages, and view or manage messages that you have sent or received.

## EMAIL

You can use the Email and Gmail applications to send email messages on your device. Before you send and receive email messages, you must add an email account.

## TALK

You can chat with friends and family using the Google Talk™ instant messaging service.

## SOCIAL HUB

Social Hub™ is an integrated communication application for SNS (Social Network Service), email and messages (see socialhub.samsungapps.com).

## CONNECT TO THE INTERNET

You can connect to the wireless web using the WLAN feature or mobile network connection. Open the web application and browse web pages, bookmark your favourite webpages or use various web options.

## DOWNLOAD APPLICATIONS

Extend your device's functionality by installing additional applications for the Android platform.

Android Market provides a quick and easy way to shop for games and mobile applications.

Samsung Apps allows you to download an abundance of applications, including games, news, reference, and social networking applications.

To install applications downloaded from locations other than Android Market and Samsung Apps, you must select **Settings** → **Applications** → **Unknown sources** → **OK**.

## MUSIC

The music player plays music files saved to your device or a memory card. It supports the following file formats: mp3, m4a, mp4, 3gp, 3ga, wma, ogg, oga, aac, and flac.

## MAPS/NAVIGATION

Use the Google Maps™ mapping service to find your location, search for places and get directions. The GPS navigation system provides voice guidance to your destination.

## S MEMO

With S Memo, you can create memos with enriched content by adding sketches, photos or sound clips.

## S PLANNER

Your device provides you with a powerful planner to help you organize your schedules and tasks more conveniently and effectively.

## CAMERA

You can take photos at resolutions up to 3264 x 2448 pixels (8 megapixels) and videos at resolutions up to 1920 x 1080 pixels. On-screen camera settings control zooming, flash, focus, scene modes, ISO, exposure, timer, and more.

## PHOTO EDITOR

You can edit photos and apply various effects, such as rotate, flip, crop, warp and colour effects.

## GALLERY

The Gallery application lets you view photos and play videos saved in your device's memory or on a memory card.

## YouTube

View and share videos via the YouTube™ video sharing service.

## BLUETOOTH

Bluetooth is a short-range wireless communications technology capable of exchanging information over a distance of about 10 m without requiring a physical connection. It allows the use of headsets, hands-free car kits, wireless printers, and other devices.

To find and pair with other Bluetooth-enabled devices, select **Settings** → **Wireless and Network** → **Bluetooth settings** → **Search for devices**.

## Wi-Fi

Use your device's wireless networking capabilities to activate and connect to any wireless local area network (WLAN) compatible with the IEEE 802.11 a/b/g/n standards. You can connect to the internet or other network devices anywhere an access point or wireless hotspot is available.

To activate Wi-fi, select **Settings** → **Wireless and Network** → **Wi-Fi settings** → **Wi-Fi**.

## AllShare

AllShare is a Digital Living Network Alliance (DLNA) service that enables you to share media files between DLNA enabled devices in your home over a WLAN.

## MOBILE HOTSPOT

Set your device as a wireless modem or wireless access point for PCs or other devices, and share your device's mobile network connection.

## SYNCHRONIZE DATA

You can synchronize data with web servers and back up or restore your data. Once synchronization is complete, your device stays connected to the web. If a change is made to the data, the updated information will automatically be synchronized between your device and the web server.

To set up synchronization, see **Settings** → **Accounts and sync**.

## PC CONNECTIONS

By connecting your device to a PC using a USB cable, you can synchronize files with Windows Media Player, transfer data to and from your device directly, and use the Samsung Kies program.

## NOTES:

Some features listed above may be unavailable depending on your region or service provider, and may not be available in certain languages.

You may incur additional charges for sending or receiving messages while outside of your home service area, or for accessing the web and downloading media files. For details, contact your service provider.

*For more information and complete instructions for using any device features, see the online User Guide at [www.samsung.ca](http://www.samsung.ca).*