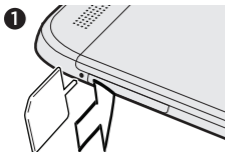


HTC One (E8) dual sim

Inserting your nano UIM/SIM and microSD cards

IMPORTANT: USE A STANDARD NANO UIM/SIM ONLY.

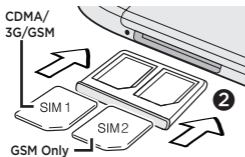
Inserting a modified SIM may damage the card slot or cause the card to not fit properly.



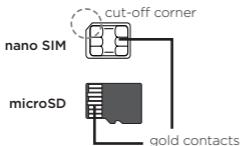
1. Insert the tip of the tray eject tool (or a small bent paperclip) into the hole next to the nano UIM/SIM card tray that's on the left side of the phone.

Push the tip all the way into the hole until the tray ejects, and then pull the tray out.

2. With contacts facing down, place a nano UIM/SIM card into the SIM 1 holder (supports CDMA/3G/GSM).

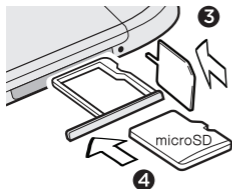


Place your second nano SIM card into the SIM 2 holder (supports GSM only).



If the card is NFC-enabled, it must be placed in the SIM 1 holder to be recognized.

Insert the tray back into the slot.



3. Use the same tray eject tool to eject the microSD™ card tray that's on the right side of the phone. Pull the tray out.
4. Place the microSD card (contacts facing down) into the tray, and then insert the tray back into the slot.

Want some guidance on using your phone?

Check out our friendly walkthroughs in the **Tips & Help** app on your phone. Or go to www.htc.com/support/ to find tutorials, the user guide, FAQs, latest news, and more.

© 2014 HTC Corporation. All rights reserved.

HTC, the HTC logo, and HTC One are trademarks of HTC Corporation.

All other company, product and service names mentioned herein are trademarks, registered trademarks or service marks of their respective owners.



91H0xxxx-xxM Rev.A

htc.com