



MOTO™ Z6w

Getting Started Guide

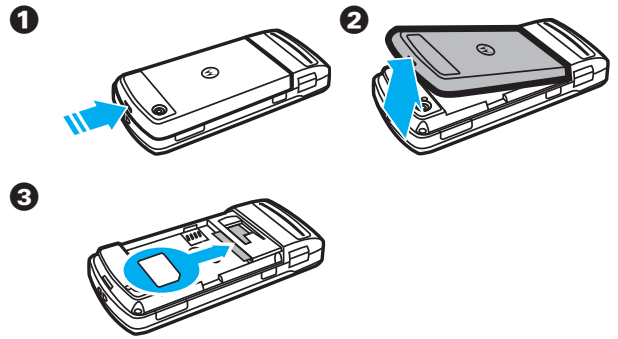
get started

To download your phone's **complete user's guide** or see a **Web Tutorial**, visit www.motorola.ca/Z6wsupport.

insert SIM card


Caution: Don't bend or scratch your SIM card. Keep it away from static electricity, water, and dirt.

Your *Subscriber Identity Module* (SIM) card stores your phone number and other information.



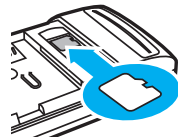
get started

insert memory card

You can store music and other multimedia files on an optional removable microSD memory card. 

Note: Your phone can use a memory card with up to 4 GB capacity (greater than 1 GB storage guaranteed only for SanDisk microSD cards).

To insert the memory card: Insert the memory card, **gold contacts down**, into the memory card slot. Push it completely into place.



To remove the memory card:

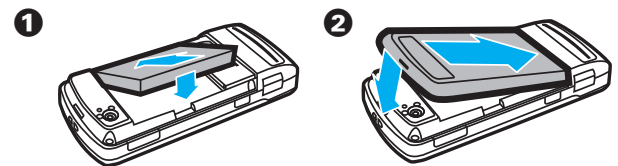
Grasp the end of the card, pull the card up slightly, then pull it out.

battery

Note: See "Battery Use and Battery Safety" on the reverse side of this sheet for additional information about your phone's battery.

get started

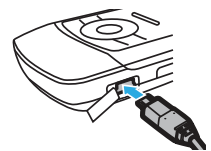
install battery



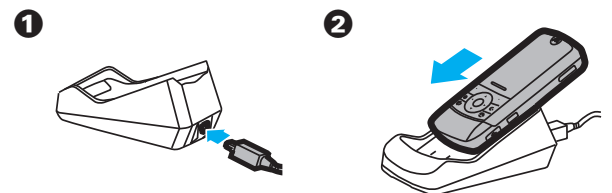
charge battery

New batteries are not fully charged.

You can charge the battery with the **travel charger**:



You can also charge the battery with the **desktop charger**:



get started

The battery charge indicator light on your phone shows when the battery is charging. The display shows **Charge Complete** when finished.

conserve battery charge

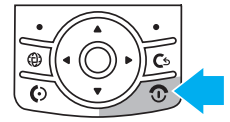
Using certain features can quickly deplete your battery's charge. **These features can include downloading music, replaying video clips, and using Bluetooth® wireless connections.**


You can conserve your battery's charge by doing the following:

- Turn Bluetooth power off when not in use (see your phone's *User's Guide*).
- Turn off wallpaper (see "wallpaper" later in this guide).
- Reduce backlight (see your phone's *User's Guide*).


get started

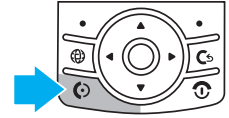
turn phone on & off



Press and hold  for a few seconds, or until the display turns on or off.


make a call

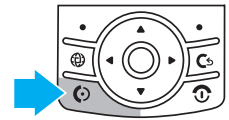
Enter a phone number and press .




Tip: To **voice dial** a call, see your phone's *User's Guide*.

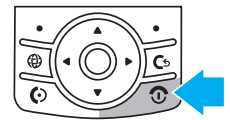
answer a call

When your phone rings and/or vibrates, press  to answer.



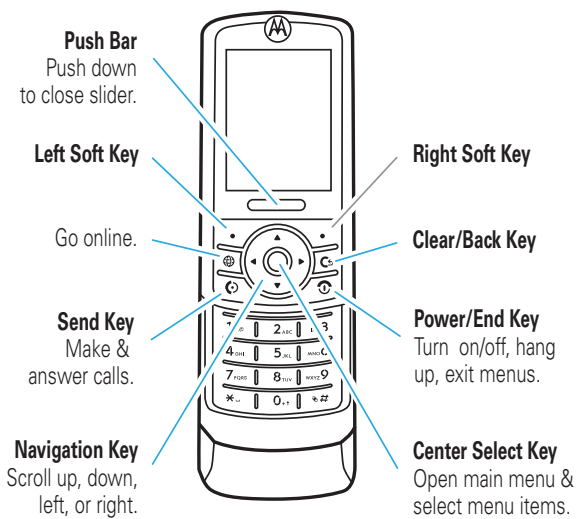
end a call



To "hang up," press .



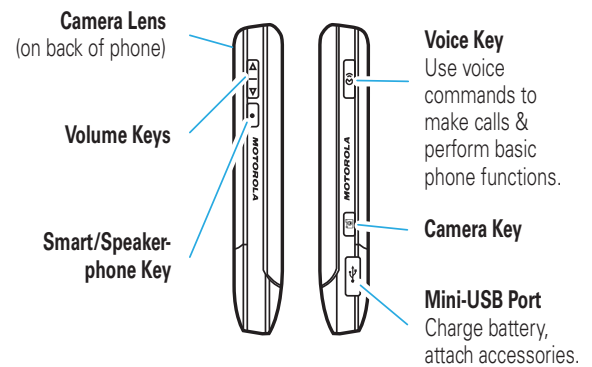
basics

your phone



Tip: Press the *center key*  to open the main menu and select menu options. Press the *clear/back key*  to delete letters or numbers, or to go back one menu.

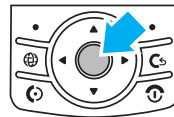
basics



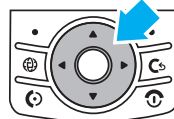
basics

menus

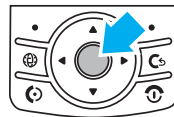
1 Press the *center key* to open the **Main Menu**.



2 Press the *navigation key* up, down, right, or left, to highlight a menu option.



3 Press the *center key* to select the highlighted option.



basics

menu map

- Tools**
 - Help
 - Calendar
 - Sync
 - Download Manager
 - File Manager
 - Alarm Clock
 - World Clock
 - Calculator
 - Task List
 - Notes
- Media**
 - Media Finder
 - Camera
 - Video Camera
 - Voice Recorder
- Games & Apps**
 - Fido Music Player
- Call History**
- Internet**
 - Browser
 - My Bookmarks
 - My Web Pages
 - History
 - Go to URL
 - Browser Setup
- Messaging**
 - Fido IM
 - Messages
 - Create Message
 - Inbox
 - My Folders
 - Templates
 - Drafts
 - Outbox
 - Sent Messages
 - Send to Server
 - Email
 - Call Voicemail
- WiFi**
 - Current Connection
 - Available Networks
 - Saved Networks
 - Quick Connect
 - Set Up WiFi
- Contacts**
- Settings**
 - Profiles
 - Themes
 - Home Screen
 - Connections
 - Call Settings
 - Phone Settings
 - Security
 - Dialing Services
 - Network

This is the standard menu layout.
Your phone's menu may be different.

accessories

Bluetooth®
Wireless
Stereo Headset S9



Bluetooth®
Wireless
Headset H375



Bluetooth®
Wireless
Headset H12



These and other accessories for your phone can be found at: www.motorola.com

For extended user guide and additional information on your phone, please visit: www.motorola.ca/Z6wsupport

basics

status indicators



- 1 **Signal Strength** – Strength of network connection.
- 2 **EDGE/GPRS** – Phone is using a high-speed *Enhanced Data for GSM Evolution (EDGE)* or *General Packet Radio Service (GPRS)* network connection.
- 3 **Bluetooth** – Bluetooth status.
- 4 **Roam** – Phone not using home calling network.
- 5 **New Message** – = text, = voice, = text & voice.
- 6 **Active Line** – = active call, = call forwarding on.
- 7 **Profile** – Alert profile setting.
- 8 **Battery Level** – Vertical bars show charge level. Recharge when phone shows **Low Battery**.

personalize

home screen shortcuts

From the home screen, you can press the navigation key up, down, left, or right as shortcuts to your favorite features. You can change the shortcuts to suit your needs.




To **change** navigation key shortcut icons in the home screen:

Find it:  >  Settings > Home Screen > NaviKey Shortcuts > Left, Right, Up, or Down

Select a direction, then choose the feature you want to open when you press the navigation key in that direction.

To **show** or **hide** navigation key shortcut icons in the home screen:

Find it:  >  Settings > Home Screen > NaviKey Shortcuts > Icon Display > Show or Hide

Note: You can press  to select the features in the home screen even when the icons are hidden.

personalize

change your phone's ring

First, set the alert style:

Find it:  >  Settings > Profiles > Alert Style


Select Ring Only, Vibrate Only, Silent, Ring & Vibrate or Vibrate then Ring.

Next, change the Ringtone for incoming calls:

Find it:  >  Settings > Profiles > Ringtone > Select Ringtone

Scroll to and select a ringtone from one of the following:

- **Music**—Select a song from your Music Library.
- **Ringtones**—Select from Preloaded Ringtones, or use a ringtone you have downloaded to your phone.

Shortcut: To quickly set the alert style to Vibrate Only from the home screen, press and hold .

personalize

wallpaper

Change the background image in the home screen:

Find it:  >  Settings > Home Screen > Change Wallpaper > Wallpaper and Graphics > Preloaded Wallpaper

screensaver

Find it:  >  Settings > Phone Settings > Display Settings > Screensaver > On or Off

Tip: To extend battery life, turn off the screensaver.

music

play music

Note: This feature is network, SIM card, or subscription dependent and may not be available in all areas.

Your phone provides two music players:

- native music player
- Fido Music Player

Note: See your phone's *User's Guide* to learn how to load music onto your computer and then transfer it to your phone.

native music player





Find it:  >  Media > Media Finder > Music Library

Select a song or playlist from these categories:

Recently Played, Shuffle Songs (play all songs in random order), All Songs, Playlists, Artists, Albums, Genres, or Composers.

music

When you select a song:

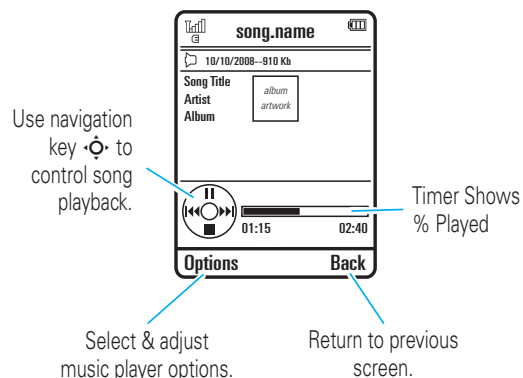
music player controls	
pause/play	Press the center key  up.
skip to next or previous song	Press & release  right or  left.
fast forward or rewind	Press & hold  right or  left (for at least two seconds).
adjust playback volume	Press the volume keys on the side of your phone.
set options like repeat and shuffle	Press Options and select Setup .

music

Roger Music Store



Find it:  >  Games & Apps > Fido Music Player

When a song is playing, you see a screen similar to the following:



music

load music files

To download songs from the Internet, use your phone's micro-browser: Press  to open the main menu, select  Internet, then go to the page with the file you want to download.

To copy files between your phone and a computer:

Use a cable connection or a Bluetooth® wireless connection. (See information about connections in your phone's *User's Guide*.)

To store Fido Music Player files: On your computer, create a folder called "music" in the memory card (which appears as a "Removable Disk" icon on your computer), not in the "mobile" folder. Then, drag and drop music files from your computer into the "music" folder on your memory card.

music

Note: Your phone can't play DRM-protected music files, such as those purchased from online music stores.

Note: The unauthorized copying of copyrighted materials is contrary to the provisions of the copyright laws of the United States and other countries. This device is intended solely for copying or playing non-copyrighted materials, materials for which you own the copyright, or materials which you are authorized or legally permitted to copy. If you are uncertain about your right to copy any material, please contact your legal adviser.

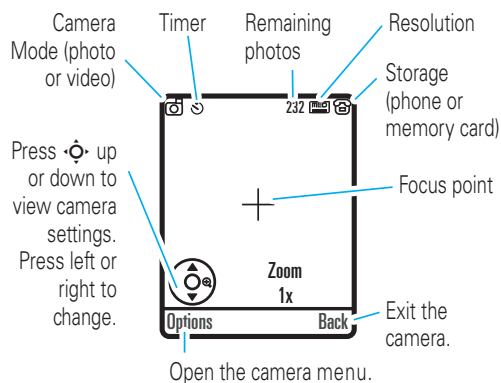
camera

take & store or send photos



Note: Some networks or plans do not support messages with photos. For details, contact your service provider.

Your camera lens is on the back of your phone. **To get the clearest pictures, wipe the lens clean with a dry cloth before you take a picture.**

- 1 Press  >  **Media** > **Camera** to see the camera viewfinder.




camera

- 2 Press the **center key**  to take the photo in the viewfinder. You can:
 - Press **Options** > **Save Only** to store the photo.
 - Press **Options** > **Apply to** > **Wallpaper** to use the photo as the background in your phone display.
 - Press  to discard the photo and return to the active viewfinder.

message

read & reply to a message

When you receive a message, your phone plays an alert, and the internal display shows **New Message** with the new message indicator .

To read and reply to the message:

- 1 Press **View**.
- 2 To answer the message, press **Options**, then select **Reply**.
- 3 Enter the text of your message.
or
To enter a prewritten text template, press **Options** and select **Insert**, then select **Text Template**. Scroll to the text template you want and press **Insert**.
- 4 Press **Send** to send your reply.

To learn more about sending and receiving messages with your phone, see phone's *User's Guide*.

message

send a message


To send a message to a phone or to an email address:

Find it:  >  **Messaging** > **Messages** > **Create Message**

To learn more about sending and receiving messages with your phone, see your phone's *User's Guide*.

email

check your email account

Check your personal Web-based **email** account (such as Hotmail, Gmail, or Yahoo!) on the Web. 

Note: You must have browser service activated on your phone to use this feature.

Find it:  >  Internet > Go to URL

Enter the URL for your Web-based email account, then press **Go**.


To learn more about using the phone browser, see your phone's *User's Guide*.

WiFi


calls over a WiFi Internet connection



You can use your phone to make and receive calls over an Internet connection (instead of a cellular network connection). To use an Internet connection, you must connect to your service provider through a WiFi CERTIFIED® wireless connection to a network access point.

available networks list

To see a list of available access points within range of your phone: 

Find it:  >  WiFi > Available Networks


Your phone lists available access points. The orange WiFi signal strength indicator  shows the strength of each WiFi connection. Other indicators can include:

- | | |
|-------------------------------|-----------------------------------------------------------------------------------------------------------------------|
| ★ = saved network |  = secure access point |
| ✓ = active network connection |  = active saved network connection |


WiFi

Scroll to the network access point you want to use, then press **Select**.

create secure network connection

To create and save a secure connection with a network access point: 

Find it:  >  WiFi > Set Up WiFi > EasyKeySetup


- 1 If necessary, read the on-screen instructions and press **Next** to begin scanning for an access point.
- 2 If necessary, scroll to the network you want to secure, then press the center key .
- 3 If prompted, enter a passcode.
- 4 On your phone, press **Continue**.

Your phone creates a secure connection with the network, and saves the network profile in the **Saved Networks** list.

Note: Your phone automatically connects to a network in the **Saved Networks** list when the phone is within range of the network access point.

WiFi

quick connect


To have your phone automatically locate and connect to an open (non-secure) network access point: 

Find it:  >  WiFi > Quick Connect

Your phone connects to the network access point with the best signal strength within range of your phone. If the first connection fails, the phone connects to the next available network.

Tip: From the home screen, press **Options** and select **Quick Connect** to connect to an open access point.

saved networks list

To see the network connection profiles you've saved on your phone: 

Find it:  >  WiFi > Saved Networks

Note: Your phone automatically connects to a network in the **Saved Networks** list when the phone is within range of the network access point.

WiFi

turn WiFi power on or off

Find it:  >  WiFi > Set Up WiFi > WiFi Power

Select **On** or **Off**.

Note: To extend battery life, use this procedure to turn off WiFi power when not in use.

www.hellomoto.com

Certain mobile phone features are dependent on the capabilities and settings of your service provider's network. Additionally, certain features may not be activated by your service provider, and/or the provider's network settings may limit the feature's functionality. Always contact your service provider about feature availability and functionality. All features, functionality, and other product specifications, as well as the information contained in this user's guide are based upon the latest available information and are believed to be accurate at the time of printing. Motorola reserves the right to change or modify any information or specifications without notice or obligation.

MOTOROLA and the Stylized M Logo are registered in the US Patent & Trademark Office. All other product or service names are the property of their respective owners. The Bluetooth trademarks are owned by their proprietor and used by Motorola, Inc. under license. Microsoft and Windows are registered trademarks of Microsoft Corporation; and Windows XP is a trademark of Microsoft Corporation. © 2008 Motorola, Inc. All rights reserved.

Caution: Changes or modifications made in the radio phone, not expressly approved by Motorola, will void the user's authority to operate the equipment.

Software Copyright Notice

The Motorola products described in this manual may include copyrighted Motorola and third-party software stored in semiconductor memories or other media. Laws in the United States and other countries preserve for Motorola and third-party software providers certain exclusive rights for copyrighted software, such as the exclusive rights to distribute or reproduce the copyrighted software. Accordingly, any copyrighted software contained in the Motorola products may not be modified, reverse-engineered, distributed, or reproduced in any manner to the extent allowed by law. Furthermore, the purchase of the Motorola products shall not be deemed to grant either directly or by implication, estoppel, or otherwise, any license under the copyrights, patents, or patent applications of Motorola or any third-party software provider, except for the normal, non-exclusive, royalty-free license to use that arises by operation of law in the sale of a product.

Manual Number: 6809520A83-B

service & repairs

If you have questions or need assistance, we're here to help.

Go to www.motorola.com/consumer/support, where you can select from a number of customer care options. You can also contact the Motorola Customer Support Center at 1-800-331-6456 (United States), 1-888-390-6456 (TTY/TDD United States for hearing impaired), or 1-800-461-4575 (Canada).

Battery Use & Battery Safety

Motorola recommends you always use Motorola-branded batteries and chargers. The warranty does not cover damage caused by non-Motorola batteries and/or chargers. **Caution:** Use of an unqualified battery or charger may present a risk of fire, explosion, leakage, or other hazard. Improper battery use, or use of a damaged battery, may result in a fire, explosion, or other hazard.

- Battery usage by children should be supervised.
- **Important:** Motorola mobile devices are designed to work best with qualified batteries. If you see a message on your display such as **Invalid Battery** or **Unable to Charge**, take the following steps:
 - Remove the battery and inspect it to confirm that it bears a Motorola "Original Equipment" hologram;
 - If there is no hologram, the battery is not a qualified battery;
 - If there is a hologram, replace the battery and retry charging it;
 - If the message remains, contact a Motorola Authorized Service Center.
- New batteries or batteries stored for a long time may take more time to charge.
- **Charging precautions:** When charging your battery, keep it near room temperature. Never expose batteries to temperatures below 0°C (32°F) or above 45°C (113°F) when charging. Always take your mobile device with you when you leave your vehicle
- When storing your battery, keep it in a cool, dry place.
- It is normal over time for battery life to decrease, and for the battery to exhibit shorter runtime between charges or require more frequent or longer charging times.
- **Avoid damage to battery and mobile device.** Do not disassemble, open, crush, bend, deform, puncture, shred, or submerge the battery or mobile device. Avoid dropping the battery or mobile device, especially on a hard surface. If your battery or mobile device has been subjected to such damage, take it to a Motorola Authorized Service Center before using. **Do not**

attempt to dry it with an appliance or heat source, such as a hair dryer or microwave oven.

- **Use care when handling a charged battery**—particularly when placing it inside a pocket, purse, or other container with metal objects. Contact with metal objects (such as jewelry, keys, beaded chains) could complete an electrical circuit (short circuit), causing the battery to become very hot, which could cause damage or injury.

Promptly dispose of used batteries in accordance with local regulations. Contact your local recycling center for proper battery disposal.

Warning: Never dispose of batteries in a fire because they may explode.



Specific Absorption Rate Data

This model wireless phone meets the government's requirements for exposure to radio waves.

Your wireless phone is a radio transmitter and receiver. It is designed and manufactured not to exceed limits for exposure to radio frequency (RF) energy set by the Federal Communications Commission (FCC) of the U.S. Government and by the Canadian regulatory authorities. These limits are part of comprehensive guidelines and establish permitted levels of RF energy for the general population. The guidelines are based on standards that were developed by independent scientific organizations through periodic and thorough evaluation of scientific studies. The standards include a substantial safety margin designed to assure the safety of all persons, regardless of age or health.

The exposure standard for wireless mobile phones employs a unit of measurement known as the Specific Absorption Rate, or SAR. The SAR limit set by the FCC and by the Canadian regulatory authorities is 1.6 W/kg.¹ Tests for SAR are conducted using standard operating positions accepted by the FCC and by Industry Canada with the phone transmitting at its highest certified power level in all tested frequency bands.

Although the SAR is determined at the highest certified power level, the actual SAR level of the phone while operating can be well below the maximum value. This is because the phone is designed to operate at multiple power levels so as to use only the power required to reach the network. In general, the closer you are to a wireless base station, the lower the power output.

Before a phone model is available for sale to the public in the U.S. and Canada, it must be tested and certified to the FCC and Industry Canada that it does not exceed the limit established by each government for safe exposure. The tests are performed in positions and locations (e.g., at the ear and worn on the body) reported to the FCC and available for review by Industry Canada. The highest SAR value for this model phone when tested for use at the ear is 1.25 W/kg, and when worn on the body, as described in this user guide, is 0.34 W/kg. (Body-worn measurements differ among phone models,² depending upon available accessories and regulatory requirements).²

While there may be differences between the SAR levels of various phones and at various positions, they all meet the governmental requirements for safe exposure. Please note that improvements to this product model could cause differences in the SAR value for later products; in all cases, products are designed to be within the guidelines.

Additional information on Specific Absorption Rates (SAR) can be found on the Cellular Telecommunications & Internet Association (CTIA) Web site:

<http://www.phonefacts.net>

or the Canadian Wireless Telecommunications Association (CWTA) Web site:

<http://www.cwta.ca>

1. In the United States and Canada, the SAR limit for mobile phones used by the public is 1.6 watts/kg (W/kg) averaged over one gram of tissue. The standard incorporates a substantial margin of safety to give additional protection for the public and to account for any variations in measurements.
2. The SAR information includes the Motorola testing protocol, assessment procedure, and measurement uncertainty range for this product.